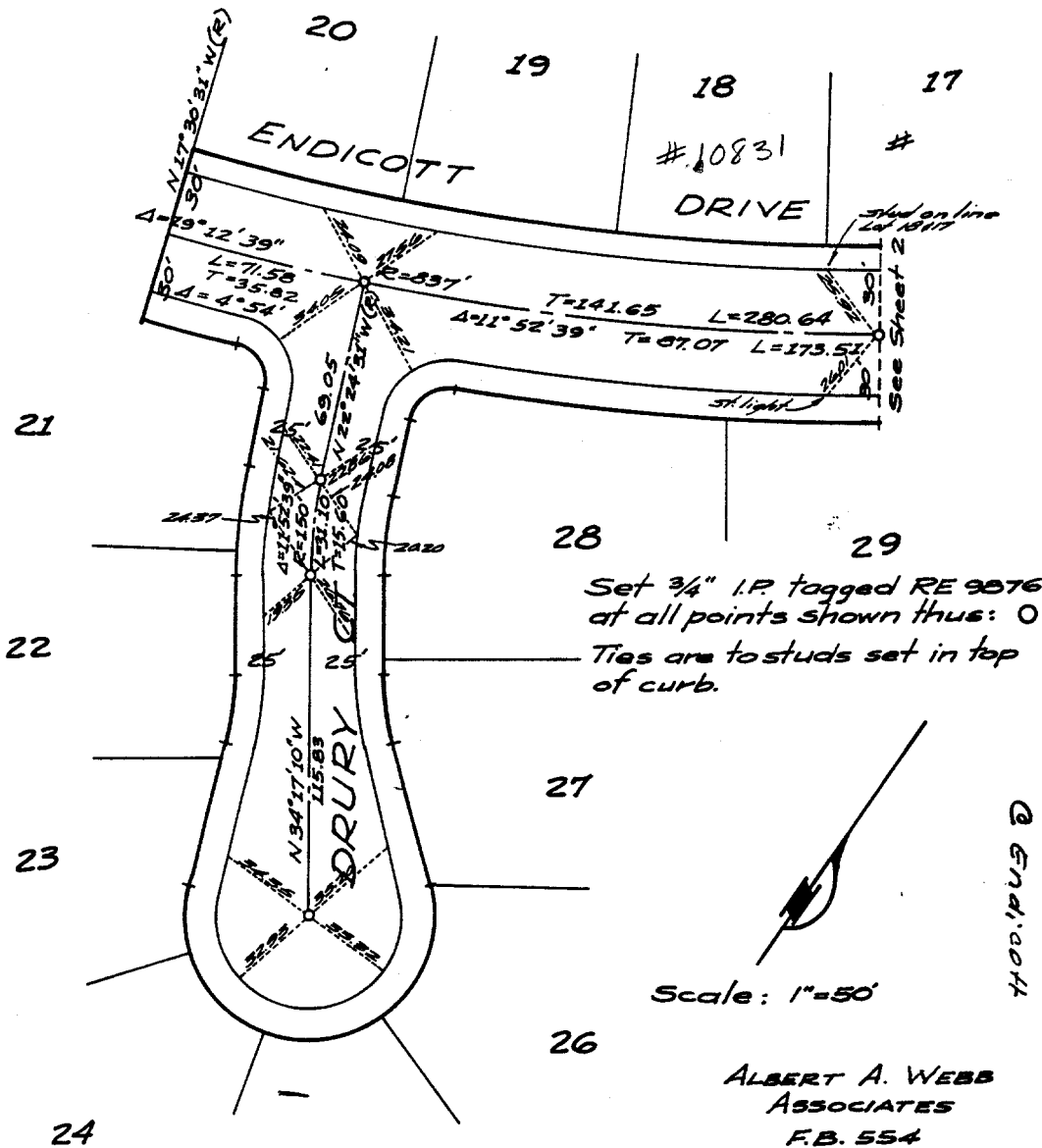


# TRACT N<sup>o</sup> 2551

Being a subdivision of a portion of Blocks 43 and 46 and portions of Lots BC and RR of La Sierra Gardens recorded in M.B. 11 pages 42-50, Riverside County Records.



Street: **DRURY CT**  
 X-Street: **ENDICOTT DR.**

OFFICIAL USE ONLY

- ✕ FD. Ramset Nail on T/C
- FD. LD. & TK. on T/C
- FD. "C" Nail on T/C
- Set LD. & TK. on T/C

Scale:  
 Date:  
 Drawn by:  
 W.O.:  
 F.B.:

## OFFICIAL TIE PLAT CITY OF RIVERSIDE

These ties are for the purpose of perpetuating the found monumentation. No claim is made as to the relationship of the points or lines shown hereon to true boundary locations.

Sheet 1 of 1  
 File No.: