

**TRACT NO. 2876**

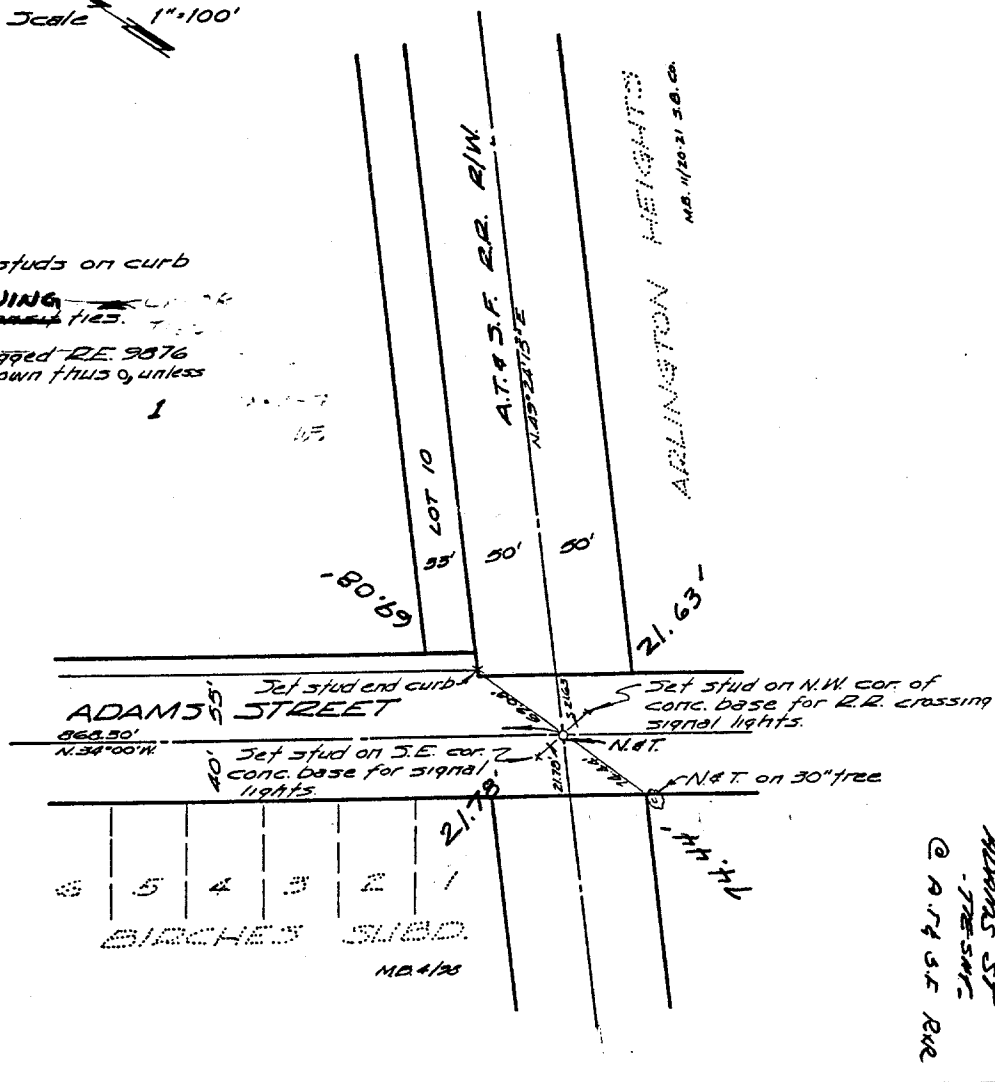
Being a Subdivision of lots 2,3,4,6 & 7 and a portion of lots 1 & 8, Block 33, a portion of the Riverside Water Co. Canal R/W in Block 33, All in Lands of the R.L. & L. Co. Per M.B. 1, Page 70, a portion of lot 9, Block 33 of lands of Jayward and Evans per M.B. 3, Page 2, Lot 1, Block 50, Lots 1 & 2 Block 41, and a portion of St. Lawrence St. vac. of Arlington Heights per M.B. 11 Pages 20-21, all records of J.B. Co. Calif. in Sections 8 & 9, T.33-R.5N. J.B. & M.

Scale 1"=100'

Set sure-fire studs on curb for tie points.

SWING ~~all~~ ties are ~~found~~ ties.

Set 3/4" IR tagged RE 9876 at all points shown thus, unless otherwise noted.



Street: **ADAMS ST**

X-Street: **A.T. & S.F. R.R. R/W**

OFFICIAL USE ONLY

- ✕ FD. Ramset Nail on T/C
- FD. "C" Nail on T/C

- FD. LD. & TK. on T/C
- Set LD. & TK. on T/C

**OFFICIAL TIE PLAT**  
CITY OF RIVERSIDE

These ties are for the purpose of perpetuating the found monumentation. No claim is made as to the relationship of the points or lines shown hereon to true boundary locations.

Scale: \_\_\_\_\_  
 Date: \_\_\_\_\_  
 Drawn by: \_\_\_\_\_  
 W.O.: \_\_\_\_\_  
 F.B.: \_\_\_\_\_

Sheet 1 of 1  
 File No.: \_\_\_\_\_