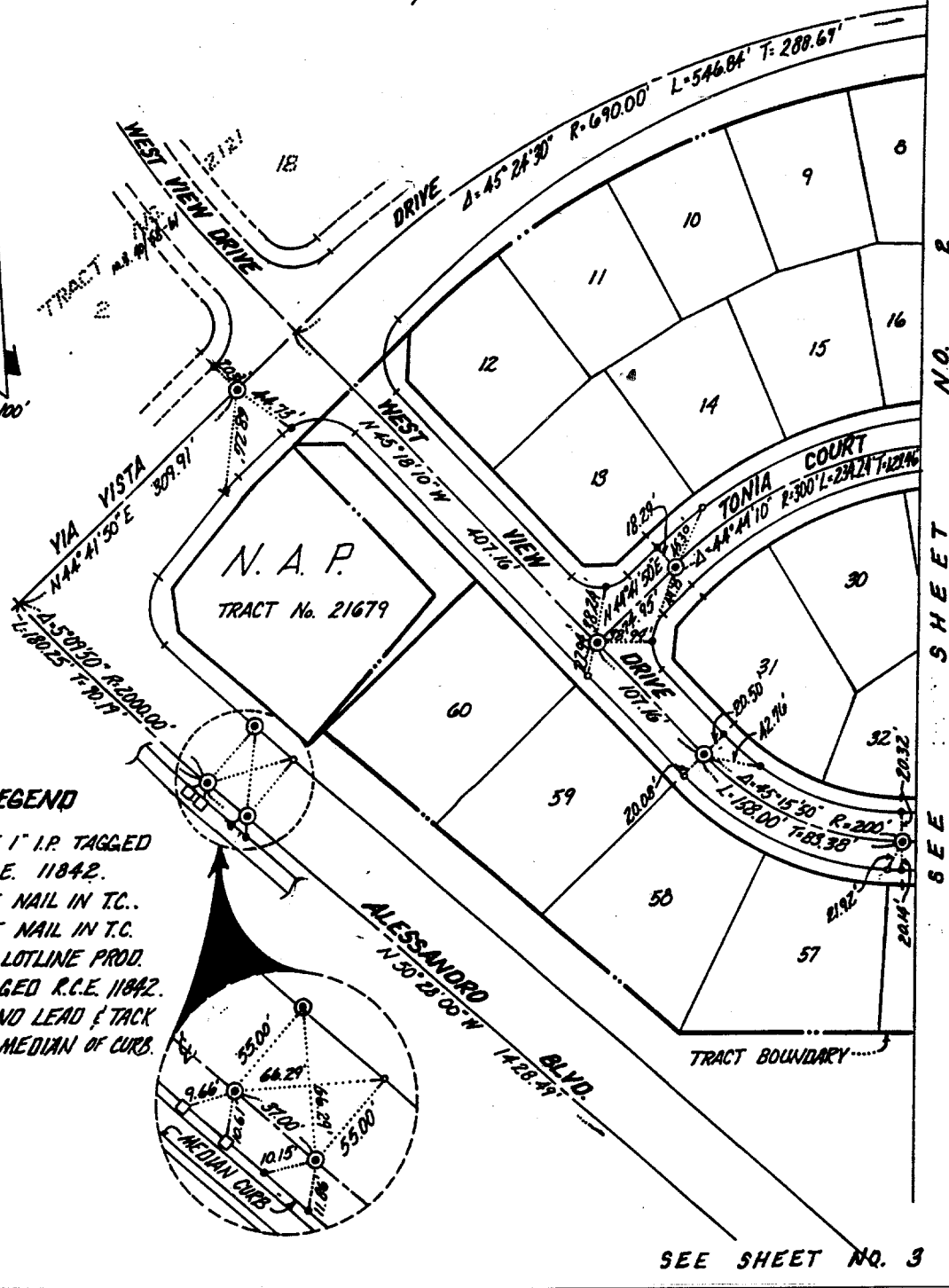


2474 TIP

TRACT NO. 21679-1

M.B. 169/12-15



LEGEND

- ⊙ SET 1" I.P. TAGGED R.C.E. 11842.
- SET NAIL IN T.C..
- SET NAIL IN T.C. AT LOTLINE PROD. TAGGED R.C.E. 11842.
- ◻ FOUND LEAD & TACK IN MEDIAN OF CURB.

- ✕ FD. Ramset Nail on T/C
- FD. "C" Nail on T/C

- FD. LD. & TK. on T/C
- Set LD. & TK. on T/C

Street: ALESSANDRO

X-Street: VIA VISTA DR

OFFICIAL USE ONLY

NO. 2 SHEET SEE

SEE SHEET NO. 3

Scale:  
Date:  
Drawn by:  
W.O.:  
F.B.:

**OFFICIAL TIE PLAT**  
**CITY OF RIVERSIDE**

*These ties are for the purpose of perpetuating the found monumentation. No claim is made as to the relationship of the points or lines shown hereon to true boundary locations.*

Sheet 1 of 3  
File No.: