

Street: **ALESSANDRO**

X-Street: **RIVERVIEW PORTAL & VIA VISTA DR.**

22

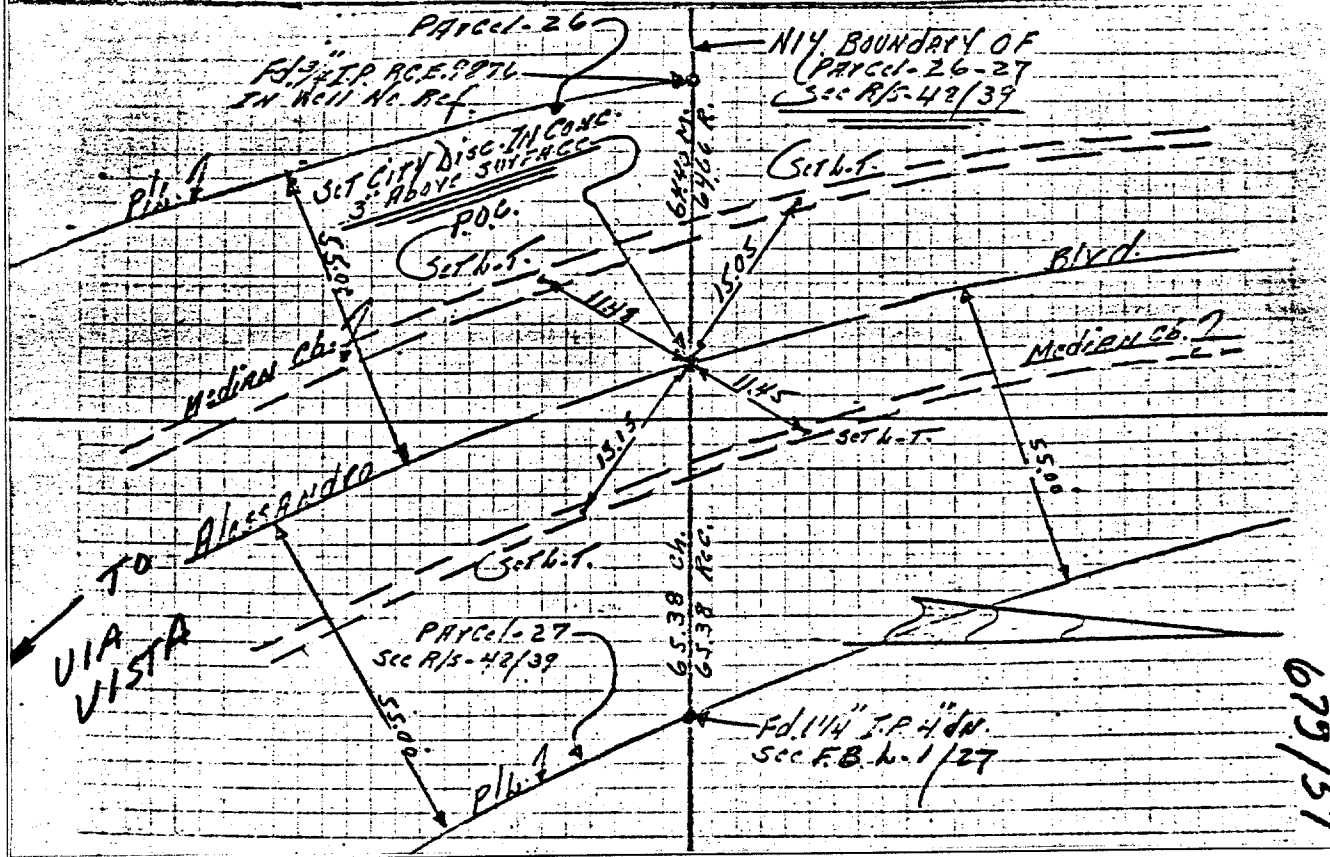
(A) Boundary line of Parcel-26-27 POC.
See Detail-R R/S-42/39

(14)

Historical DATA
F.B. 6-1/27 F.B. 679/57
R/S-42/39

Field CROW
LOWRY
THOMP
ETAL
F.B. 679/57
1-23-63

"NOTE" TRANSIT TIES



- ✕ FD. Ramset Nail on T/C
- FD. "C" Nail on T/C

- FD. LD. & TK. on T/C
- Set LD. & TK. on T/C

Scale:
Date:
Drawn by:
W.O.:
F.B.:

OFFICIAL TIE PLAT
CITY OF RIVERSIDE

These ties are for the purpose of perpetuating the found monumentation. No claim is made as to the relationship of the points or lines shown hereon to true boundary locations.

Sheet 1 of 1
File No.: