

Street: Alessandro

X-Street: Wiley of Hawley Dr.

27

OFFICIAL USE ONLY

"NOTE" CONT. IN FB. 620/77 Alessandro Blvd.

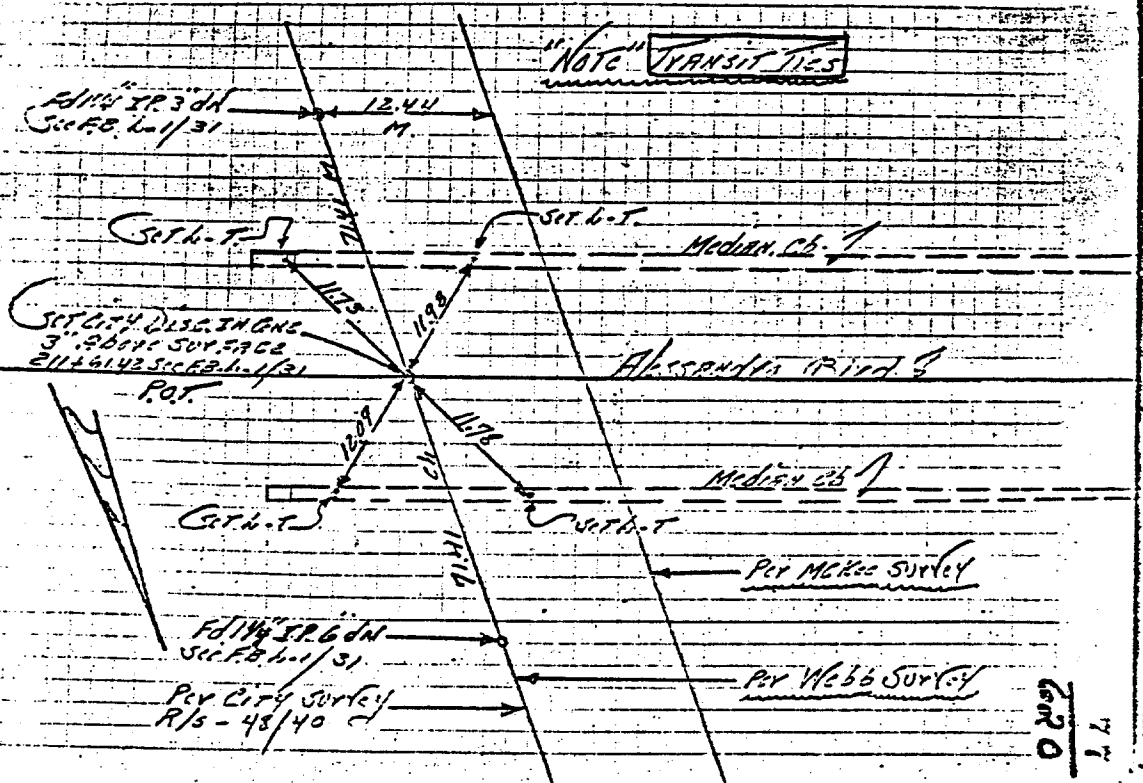
(19)

MAN. SET & MAN. TIES

Historical DATA
SEC FB. 6-1/31
SEC R/S. - 48/40

FIELD CREW
LOWRY
THOMPSON
FRYE
FB. 620/77
1-12-1962

"NOTE" SEC R/S - 48/40 Detail - 17



- ✕ FD. Ramset Nail on T/C
- FD. LD. & TK. on T/C
- FD. "C" Nail on T/C
- Set LD. & TK. on T/C

Scale:
Date:
Drawn by:
W.O.:
F.B.:

OFFICIAL TIE PLAT

CITY OF RIVERSIDE

These ties are for the purpose of perpetuating the found monumentation. No claim is made as to the relationship of the points or lines shown hereon to true boundary locations.

Sheet 1 of 1
File No.: