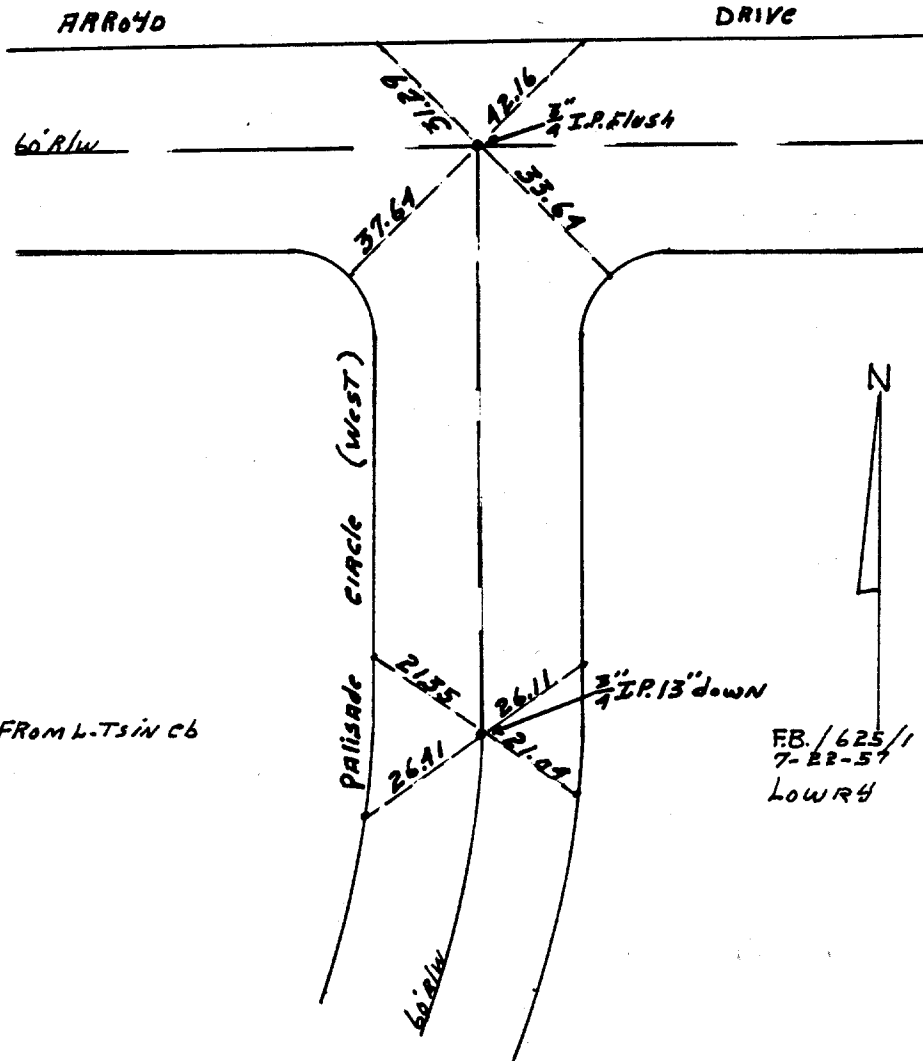


2543.TIF

#2

ARROYO @
PALISADE CIRCLE
"WEST"



NOTE - X Ties FROM L.T. IN CB

FB. / 625 / 1
7-22-57
LOWRY

ARROYO

Street: **ARROYO**

OFFICIAL USE ONLY
X-Street: **PALISADE CIRCLE (WEST)** **2**

- ✕ FD. Ramset Nail on T/C
- FD. "C" Nail on T/C

- FD. LD. & TK. on T/C
- Set LD. & TK. on T/C

OFFICIAL TIE PLAT CITY OF RIVERSIDE

These ties are for the purpose of perpetuating the found monumentation. No claim is made as to the relationship of the points or lines shown hereon to true boundary locations.

Scale:
Date:
Drawn by:
W.O.:
F.B.:

Sheet 1 of 1
File No.: