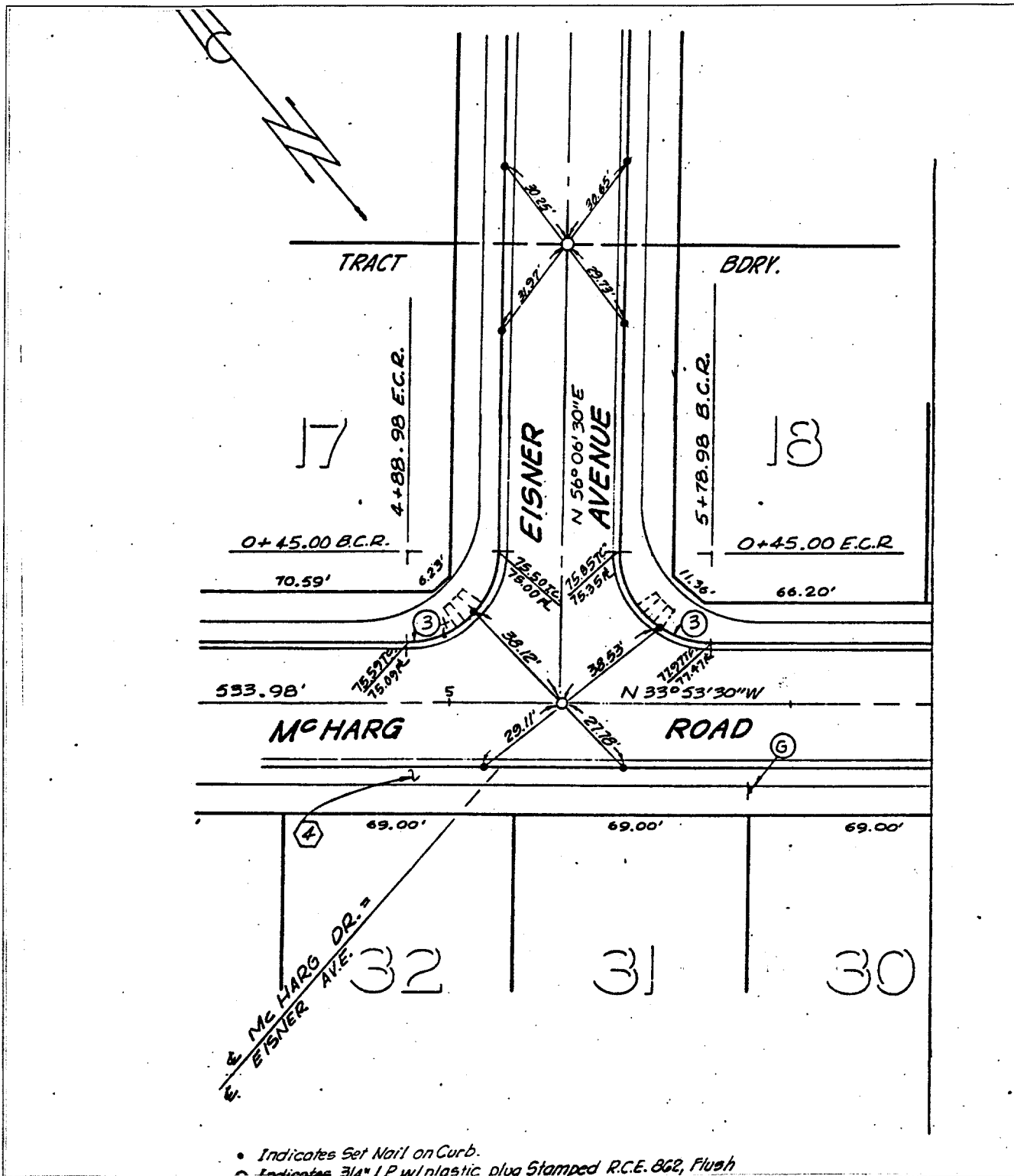


Street: **EISNER AVE**

X-Street: **McHARG RD.**  
OFFICIAL USE ONLY



• Indicates Set Nail on Curb.  
 ○ Indicates 3/4\" x 1 P w/ plastic plus Stamped R.C.E. 862, Flush

- ✕ FD. Ramset Nail on T/C
- FD. LD. & TK. on T/C
- FD. "C" Nail on T/C
- Set LD. & TK. on T/C

Scale:  
 Date:  
 Drawn by:  
 W.O.:  
 F.B.:

**OFFICIAL TIE PLAT**  
**CITY OF RIVERSIDE**

*These ties are for the purpose of perpetuating the found monumentation. No claim is made as to the relationship of the points or lines shown hereon to true boundary locations.*

TRACT 8898-1

Sheet **2** of **6**

File No.: