

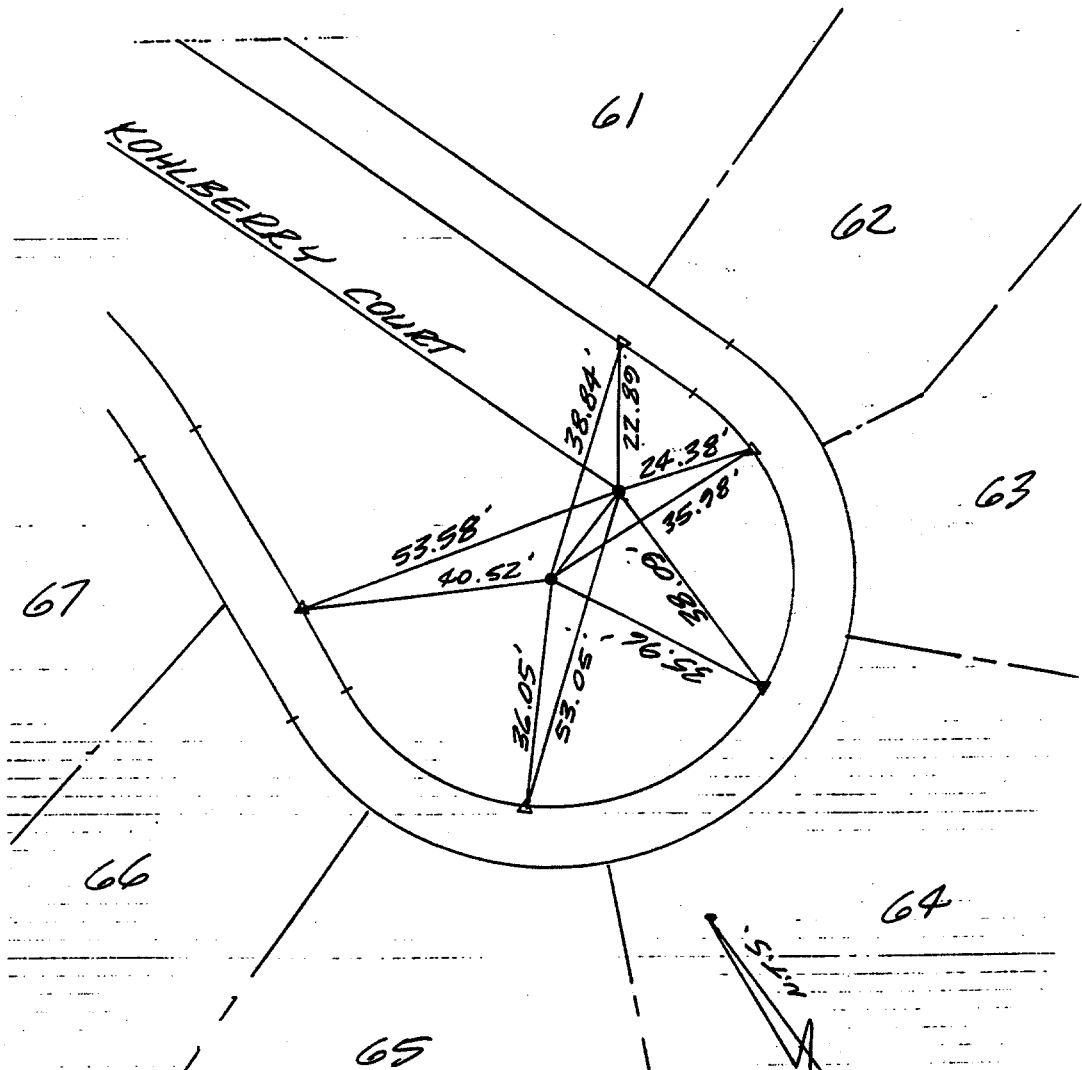
266.71F

DATE 4-24-00  
JOB NO. 30728.000

# SWING TIES

FB 1 PG 7  
SHEET 7 OF 10

CLIENT E TIES TR-22408-2 JOB NAME SYCAMORE  
DESCRIPTION KOHLBERRY COURT



CREW GR.  
REF.

MULTI. NOTES:  
 ● SET HEAD SPINE & WASHER  
 ● STAMPED LS 5346  
 FUSH W/AC. (TYP)  
 △ SET LEAD & FACE FUSH  
 W/TC. (TYP)

- ✕ FD. Ramset Nail on T/C
- FD. LD. & TK. on T/C
- FD. "C" Nail on T/C
- Set LD. & TK. on T/C

Scale: N.T.S.  
 Date: 4-24-00  
 Drawn by:  
 W.O.:  
 F.B.:

## OFFICIAL TIE PLAT

### CITY OF RIVERSIDE

These ties are for the purpose of perpetuating the found monumentation. No claim is made as to the relationship of the points or lines shown hereon to true boundary locations.

Sheet 1 of 1  
 File No.:

Street: KOHLBERRY COURT  
 X-Street: \_\_\_\_\_  
 OFFICIAL USE ONLY

APPECROSS DRIVE