

Street: **ELENOR ST.**

OFFICIAL USE ONLY

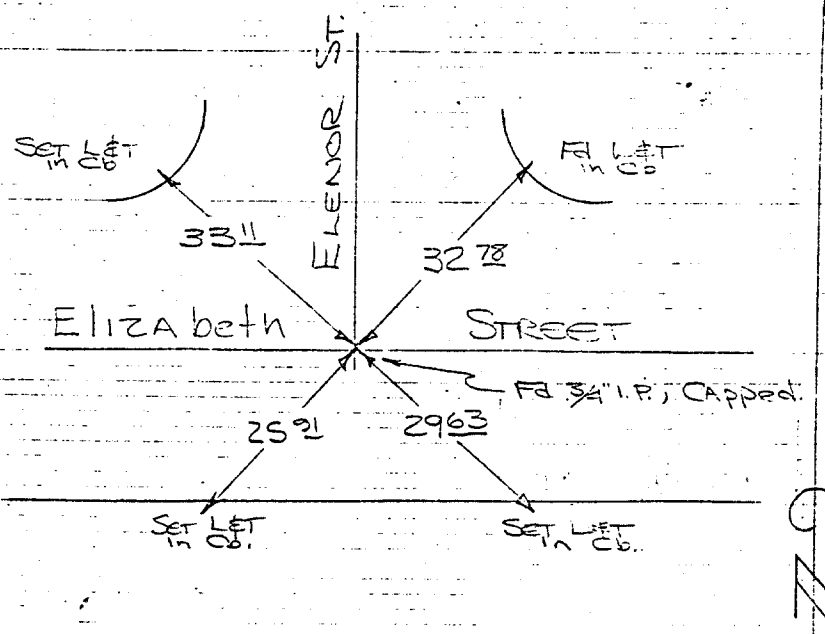
X-Street: **ELIZABETH**

ELENOR ST  
AT  
ELIZABETH ST.

TRANSIT TIES

HISTORICAL DATA

Crew:  
HUTCHINSON  
THORP  
RUSSELL  
DATE:  
SEPT. 3, 1968  
CRFB 852/36



ELIZABETH ST  
@ ELIZABETH

- ✕ FD. Ramset Nail on T/C
- FD. LD. & TK. on T/C
- FD. "C" Nail on T/C
- Set LD. & TK. on T/C

Scale:  
Date:  
Drawn by:  
W.O.:  
F.B.:

**OFFICIAL TIE PLAT**  
**CITY OF RIVERSIDE**

*These ties are for the purpose of perpetuating the found monumentation. No claim is made as to the relationship of the points or lines shown hereon to true boundary locations.*

Sheet 1 of 1  
File No.: