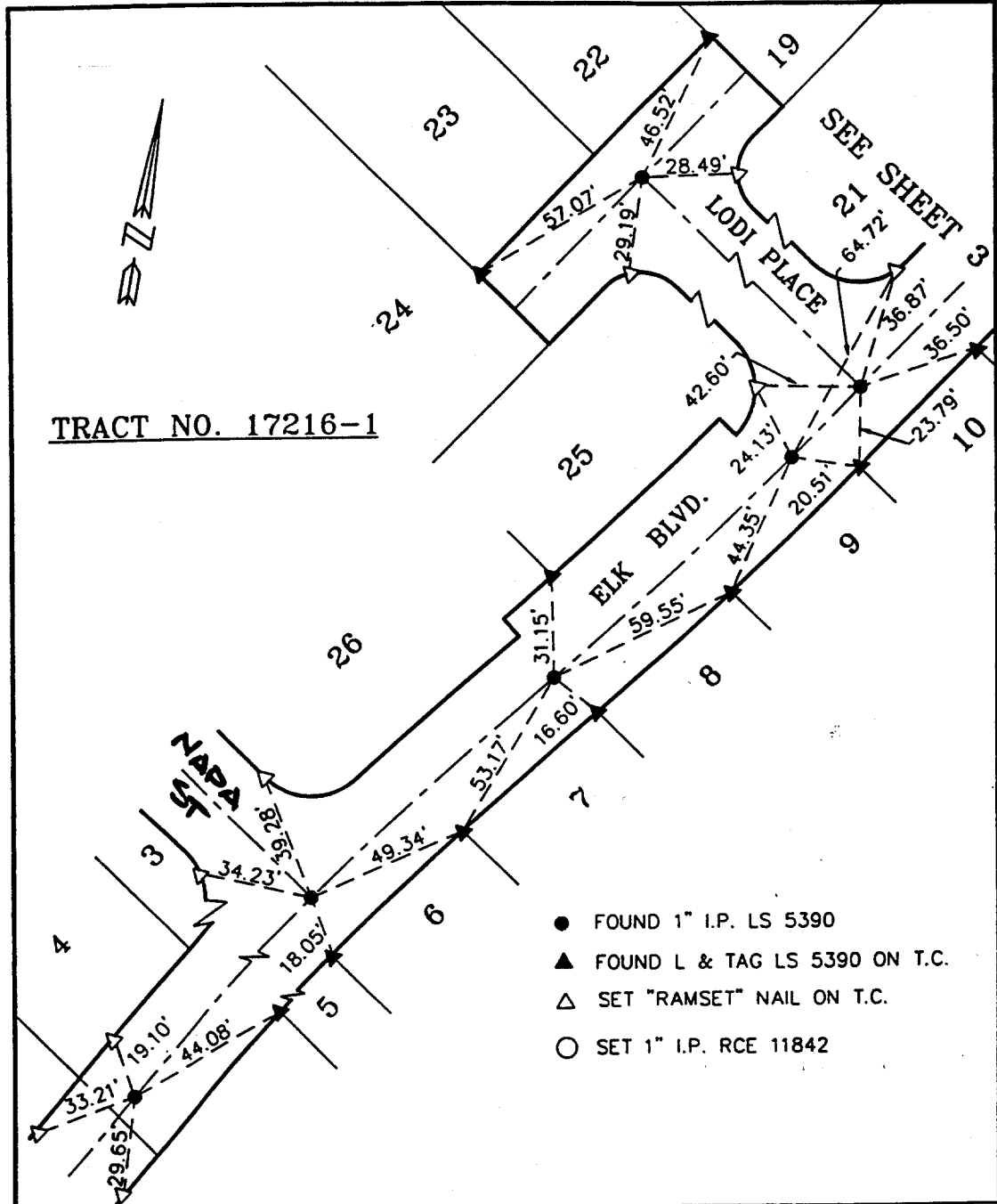


Street: ELK BLVD

X-Street: LODI PL.

OFFICIAL USE ONLY



TRACT NO. 17216-1

- FOUND 1" I.P. LS 5390
- ▲ FOUND L & TAG LS 5390 ON T.C.
- △ SET "RAMSET" NAIL ON T.C.
- SET 1" I.P. RCE 11842

SCALE:	1" = 40'
DATE:	DEC 1995
DR. BY:	CK. BY:
W.O.	83-115

OFFICIAL TIE PLAT
CITY OF RIVERSIDE
 ALBERT A. WEBB ASSOCIATES
 CONSULTING ENGINEERS

SHEET
2
 OF 3 SHEETS

ELK BLVD & NAPA
 LODI PL.

- ✕ FD. Ramset Nail on T/C
- FD. LD. & TK. on T/C
- FD. "C" Nail on T/C
- Set LD. & TK. on T/C

Scale:
Date:
Drawn by:
W.O.:
F.B.:

OFFICIAL TIE PLAT
CITY OF RIVERSIDE

These ties are for the purpose of perpetuating the found monumentation. No claim is made as to the relationship of the points or lines shown hereon to true boundary locations.

Sheet 1 of 1
 File No.: