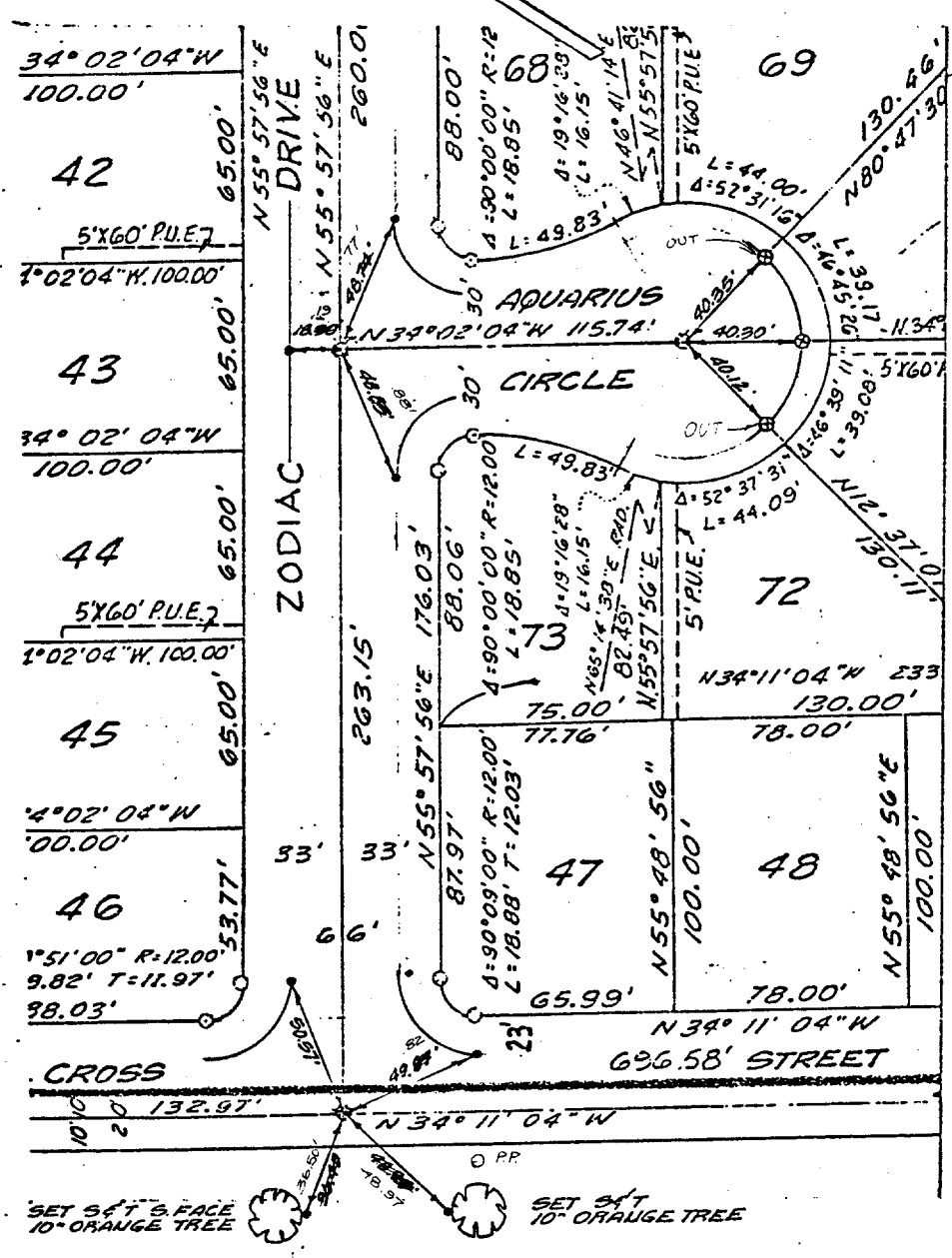


274.71F  
AQUARIUS CIRCLE



- Indicates Set . . . . . 1/2" Brass Cap Stamped R.C.E. 862
- ⊙ Indicates Set . . . . . 3/4" Iron Pipe Tagged R.C.E. 862
- ⊗ Indicates Set Nail & Tagged R.C.E. 862 In Curb.
- Indicates Set Nail In Curb.

- ⊗ FD. Ramset Nail on T/C
- FD. LD. & TK. on T/C
- FD. "C" Nail on T/C
- Set LD. & TK. on T/C

Street: **AQUARIUS CIRCLE** X-Street: **ZODIAC DR. & CROSS ST.**

OFFICIAL USE ONLY

Scale:  
Date:  
Drawn by:  
W.O.:  
F.B.:

**OFFICIAL TIE PLAT**  
**CITY OF RIVERSIDE**

*These ties are for the purpose of perpetuating the found monumentation. No claim is made as to the relationship of the points or lines shown hereon to true boundary locations.*

TRACT NO. 4915

Sheet **3** of **8**

File No.: