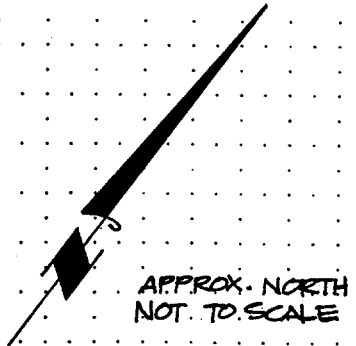
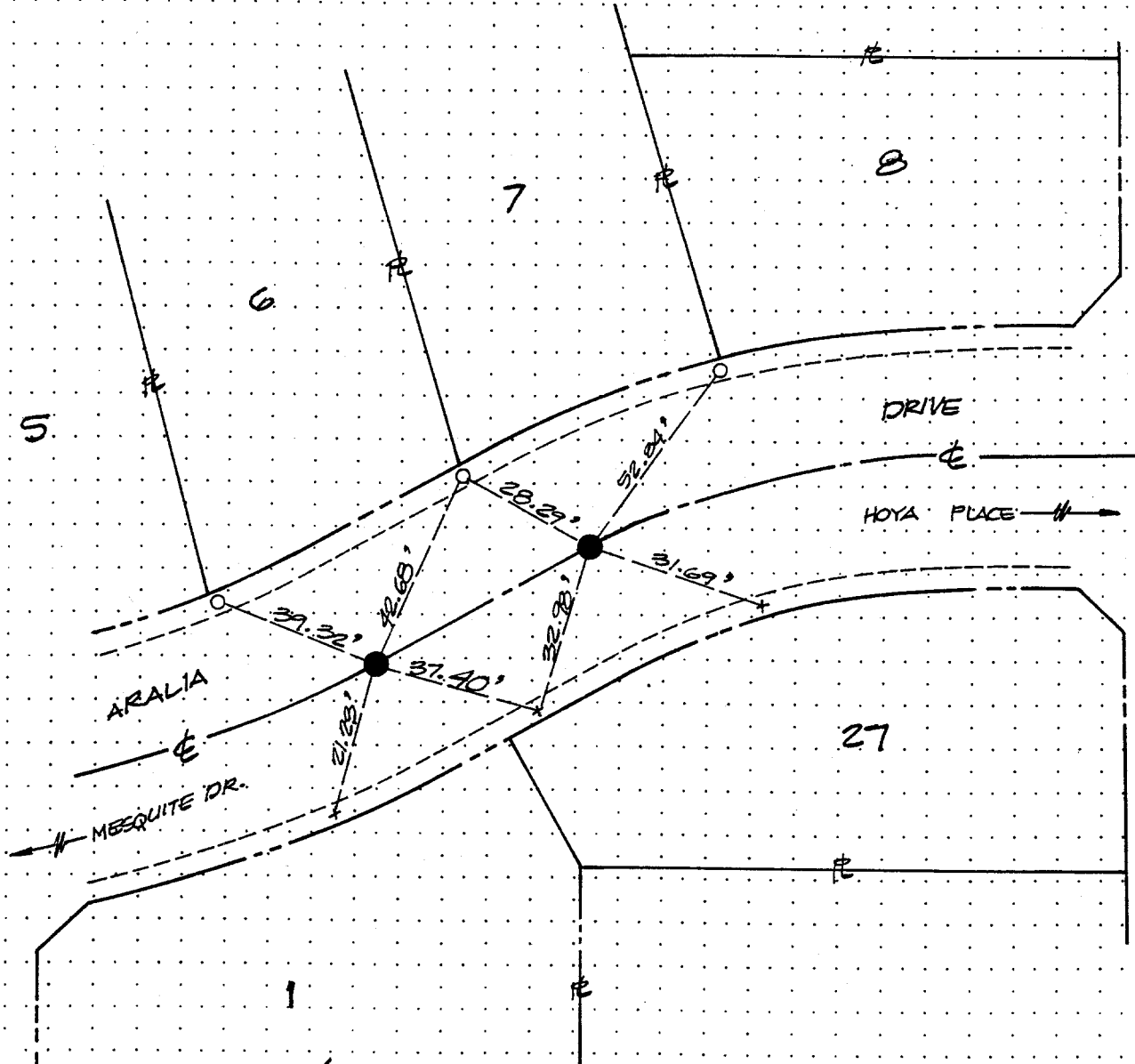


STREET ARALIA OFFICE USE ONLY X-STREET B.C.-E.C. BETW. MESQUITE & HOYA

278.71F

TIES FOR TRACT 8716  
MAP BOOK 130 PAGE 68



- LEGEND:
- 1" I.P. TAGGED R.C.E. 7211
  - TIE POINTS ARE LEAD AND TACK SET IN TOP OF CURB, UNLESS OTHERWISE NOTED.
  - + SET SCRIBED '+', SET IN TOP OF CURB, UNLESS OTHERWISE NOTED.
  - CURB LINE
  - - - TIE LINE

SCALE: N.T.S.  
 DATE: 7-17-98  
 DR. BY: *JR*  
 W.O.:  
 F.B.:

**OFFICIAL TIE PLAT**  
 CITY OF RIVERSIDE  
 PREPARED BY: FORKERT ENGINEERING & SURVEYING  
 HUNTINGTON BEACH, CA. 92646  
 (714) 963-6793

SHEET  
 15  
 OF SHEETS  
 FILE NO.: