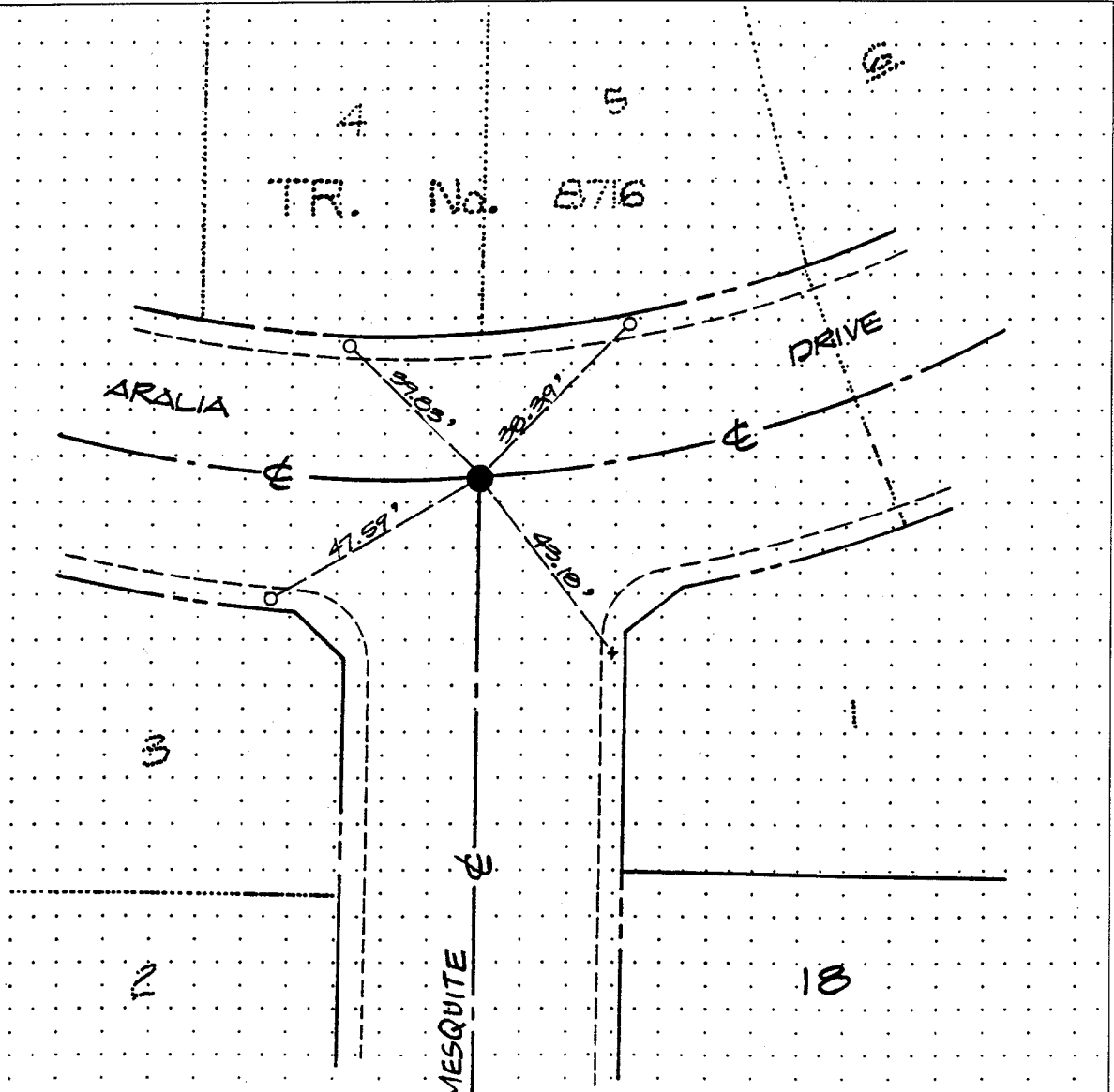


279.71 F

TR. No. 8716



LEGEND:

- I.P. TAGGED R.C.E. 7211
- TIE POINTS ARE LEAD AND TACK SET IN TOP OF CURB, UNLESS OTHERWISE NOTED.
- + SET SCRIBED +. SET IN TOP OF CURB, UNLESS OTHERWISE NOTED
- CURB LINE
- TIE LINE

- × FD. Ramset Nail on T/C
- FD. "C" Nail on T/C

- FD. LD. & TK. on T/C
- Set LD. & TK. on T/C

Street: ARALIA DR.

OFFICIAL USE ONLY

X-Street: MESQUITE

Scale:
Date:
Drawn by:
W.O.:
F.B.:

OFFICIAL TIE PLAT
CITY OF RIVERSIDE

These ties are for the purpose of perpetuating the found monumentation. No claim is made as to the relationship of the points or lines shown hereon to true boundary locations.

Sheet 1 of 1
File No.: