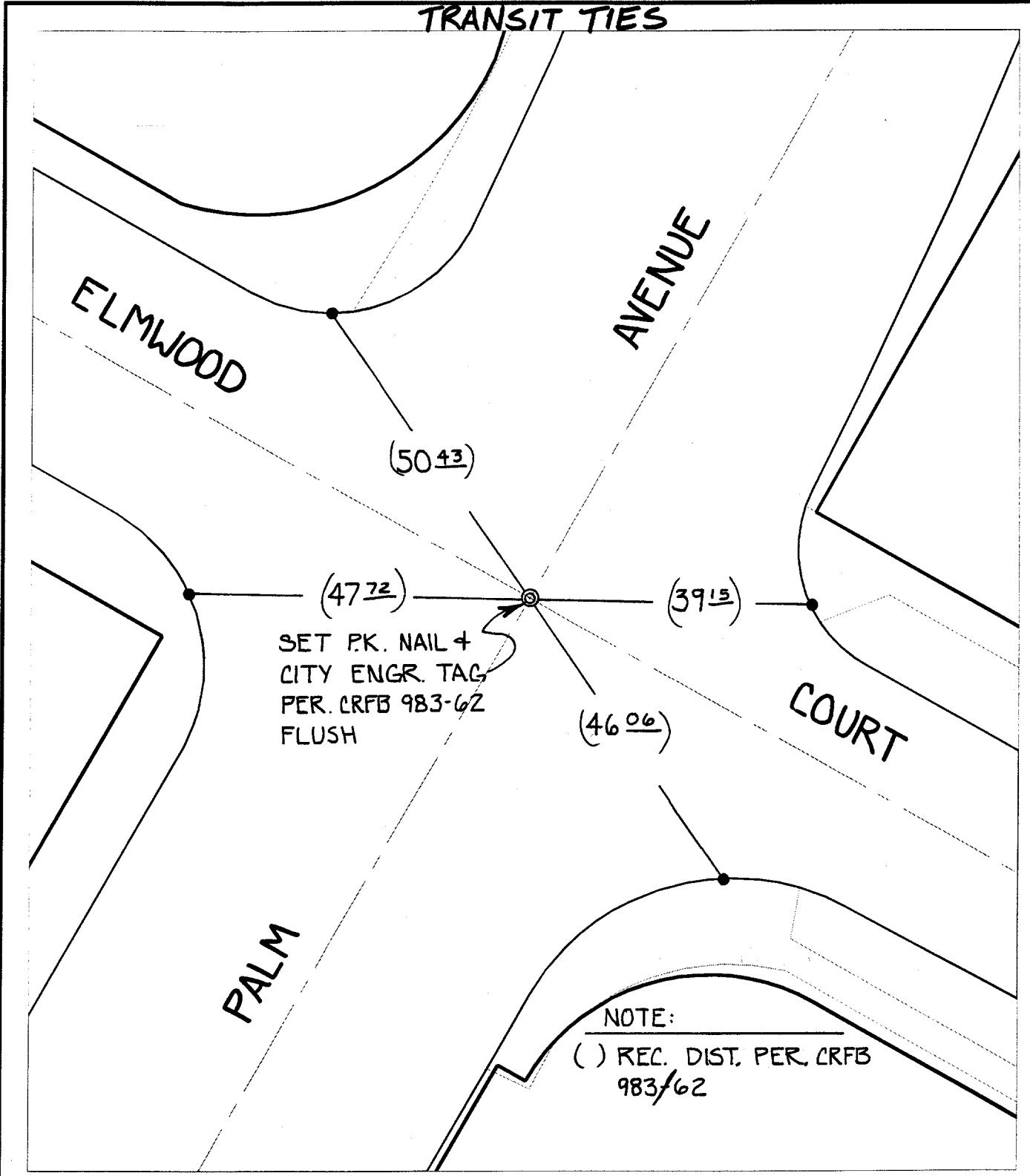


3006.TIF

TRANSIT TIES



SET P.K. NAIL +
CITY ENGR. TAG
PER. CRFB 983-62
FLUSH

NOTE:
() REC. DIST. PER. CRFB
983/62

- ✕ FD. Ramset Nail on T/C
- FD. LD. & TK. on T/C
- FD. "C" Nail on T/C
- Set LD. & TK. on T/C

Street: PALM AVENUE
 X-Street: ELMWOOD COURT
 OFFICIAL USE ONLY

Scale: 1" = 20'
 Date: 04/19/00
 Drawn by: SURVEY
 W.O.:
 F.B.:

OFFICIAL TIE PLAT
CITY OF RIVERSIDE

These ties are for the purpose of perpetuating the found monumentation. No claim is made as to the relationship of the points or lines shown hereon to true boundary locations.



Sheet 1 of 1
 File No.: