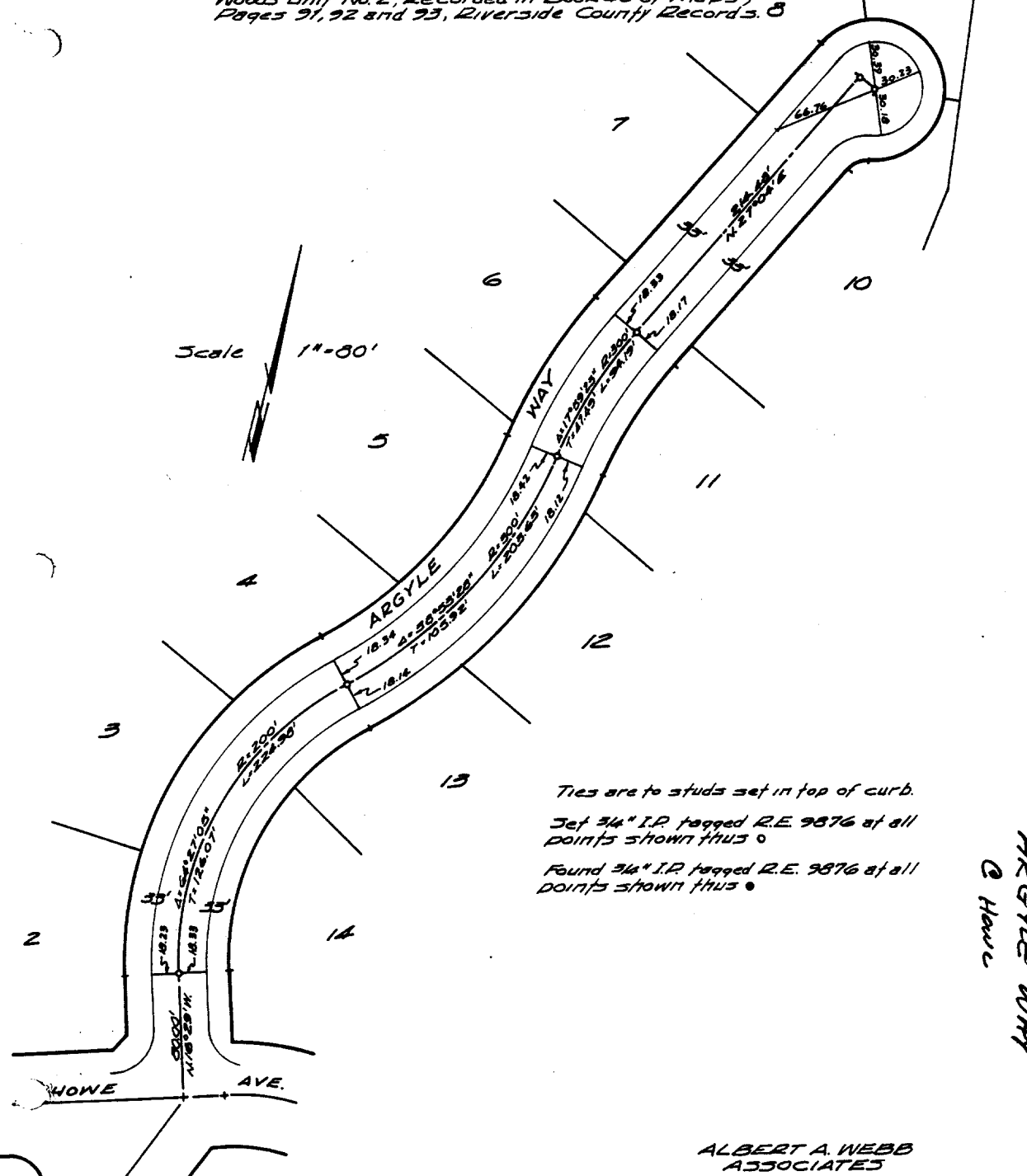


**TRACT NO. 2623**

ARGYLE WAY

Being a subdivision of portions of lots 2, 3, 7, 8 and 11 of the Church Subdivision, as recorded in Book 6 of Maps, Page 55 and a portion of lot A of Victoria Woods Unit No. 2, Recorded in Book 40 of Maps, Pages 91, 92 and 93, Riverside County Records. 8

301.101



Scale 1" = 80'

Ties are to studs set in top of curb.  
 Set 3/4" I.P. tagged R.E. 9876 at all points shown thus ○  
 Found 3/4" I.P. tagged R.E. 9876 at all points shown thus ●

ALBERT A. WEBB ASSOCIATES

- ✕ FD. Ramset Nail on T/C
- FD. LD. & TK. on T/C
- FD. "C" Nail on T/C
- Set LD. & TK. on T/C

Street: ARGYLE WAY

X-Street: HOWE

OFFICIAL USE ONLY

ARGYLE WAY  
 © Howe

Scale:  
 Date:  
 Drawn by:  
 W.O.:  
 F.B.:

**OFFICIAL TIE PLAT**  
**CITY OF RIVERSIDE**

*These ties are for the purpose of perpetuating the found monumentation. No claim is made as to the relationship of the points or lines shown hereon to true boundary locations.*

Sheet 1 of 1  
 File No.: