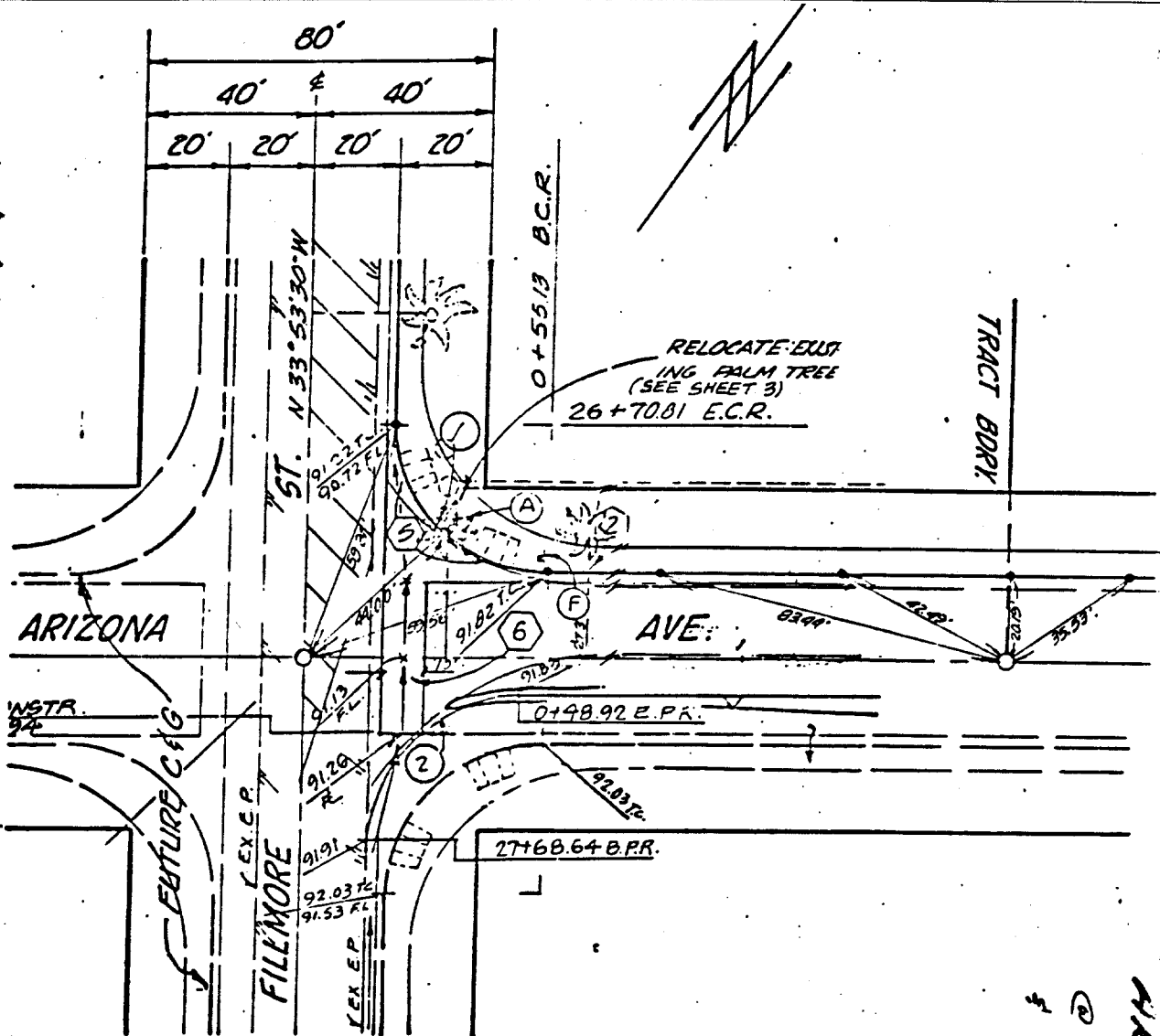


Street: ARIZONA AVE

X-Street: FILMORE

OFFICIAL USE ONLY

309.77F



- Indicates set Nail on Curb.
- Indicates 3/4" I.P. with plastic plug stamped R.C.E. 862, Flush

ARIZONA AVE  
 @ FILMORE ST  
 & TR. BOUNDARY

SSOCIATES | MONUMENT TIES | SHEET NO. / OF 6

- ✕ FD. Ramset Nail on T/C
- FD. LD. & TK. on T/C
- FD. "C" Nail on T/C
- Set LD. & TK. on T/C

Scale:  
 Date:  
 Drawn by:  
 W.O.:  
 F.B.:

## OFFICIAL TIE PLAT

### CITY OF RIVERSIDE

These ties are for the purpose of perpetuating the found monumentation. No claim is made as to the relationship of the points or lines shown hereon to true boundary locations.

Sheet 1 of 6  
 File No.: