

3099 TIF

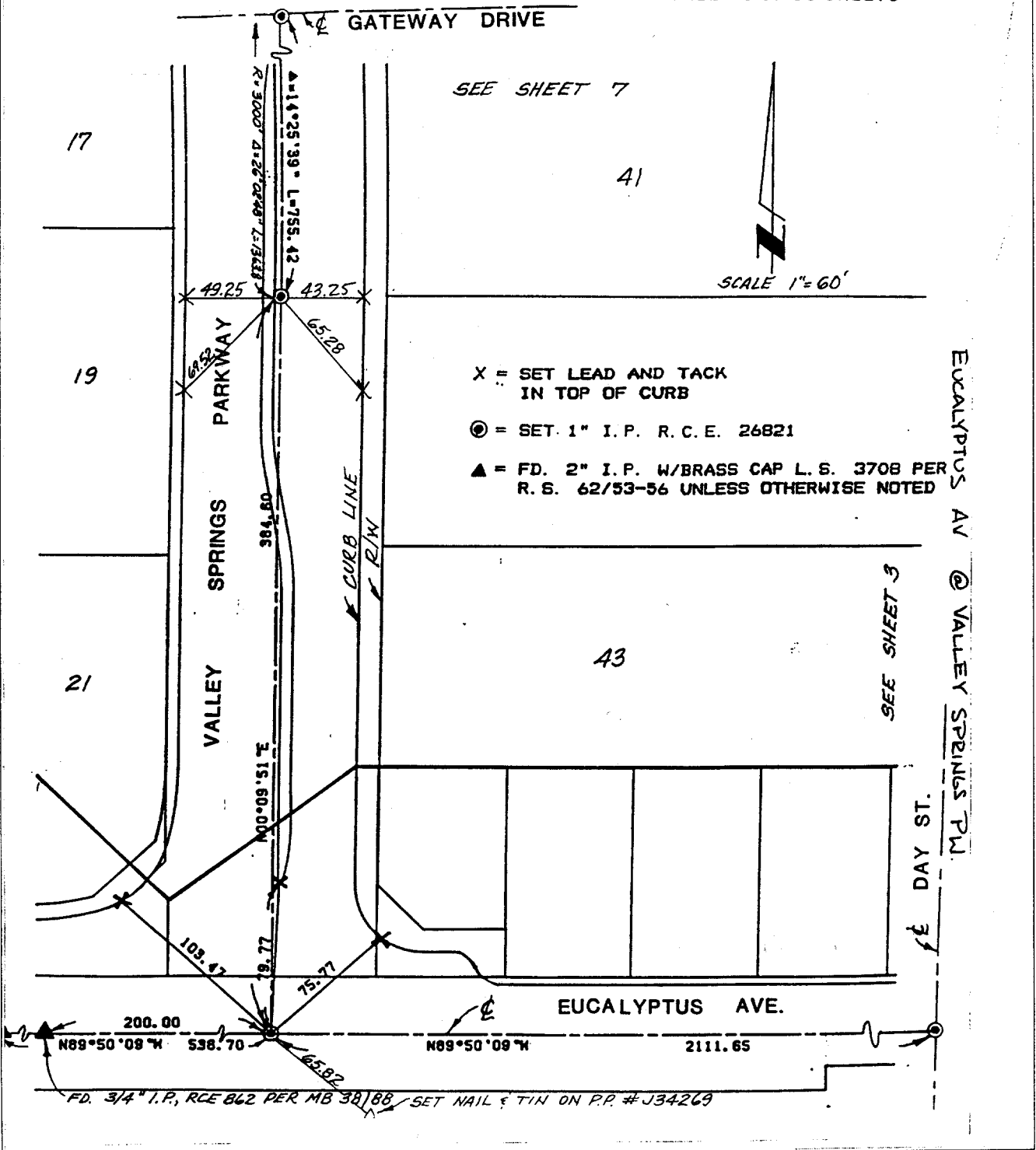
SHEET 2 OF 18 SHEETS

Street: EUCALYPTUS

OFFICIAL USE ONLY

X-Street: Valley Springs Pkwy

20



SEE SHEET 7

SCALE 1" = 60'

- X = SET LEAD AND TACK IN TOP OF CURB
- = SET 1" I.P. R.C.E. 26821
- ▲ = FD. 2" I.P. W/BRASS CAP L.S. 3708 PER R.S. 62/53-56 UNLESS OTHERWISE NOTED

SEE SHEET 3

- ✕ FD. Ramset Nail on T/C
- FD. LD. & TK. on T/C
- FD. "C" Nail on T/C
- Set LD. & TK. on T/C

**OFFICIAL TIE PLAT**  
**CITY OF RIVERSIDE**

*These ties are for the purpose of perpetuating the found monumentation. No claim is made as to the relationship of the points or lines shown hereon to true boundary locations.*

Scale:  
 Date:  
 Drawn by:  
 W.O.:  
 F.B.:

Sheet 1 of 1  
 File No.: