

3104 TIF

CIVIL ENGINEERS • SURVEYORS • PLANNERS

SHEET 1 OF 1 SHEET

SURVEY OF TRACT 18574

FOR K & B

W.O.No. 82-7831

DATE 4-16-84

SURVEY PARTY ANHORN-HOOD

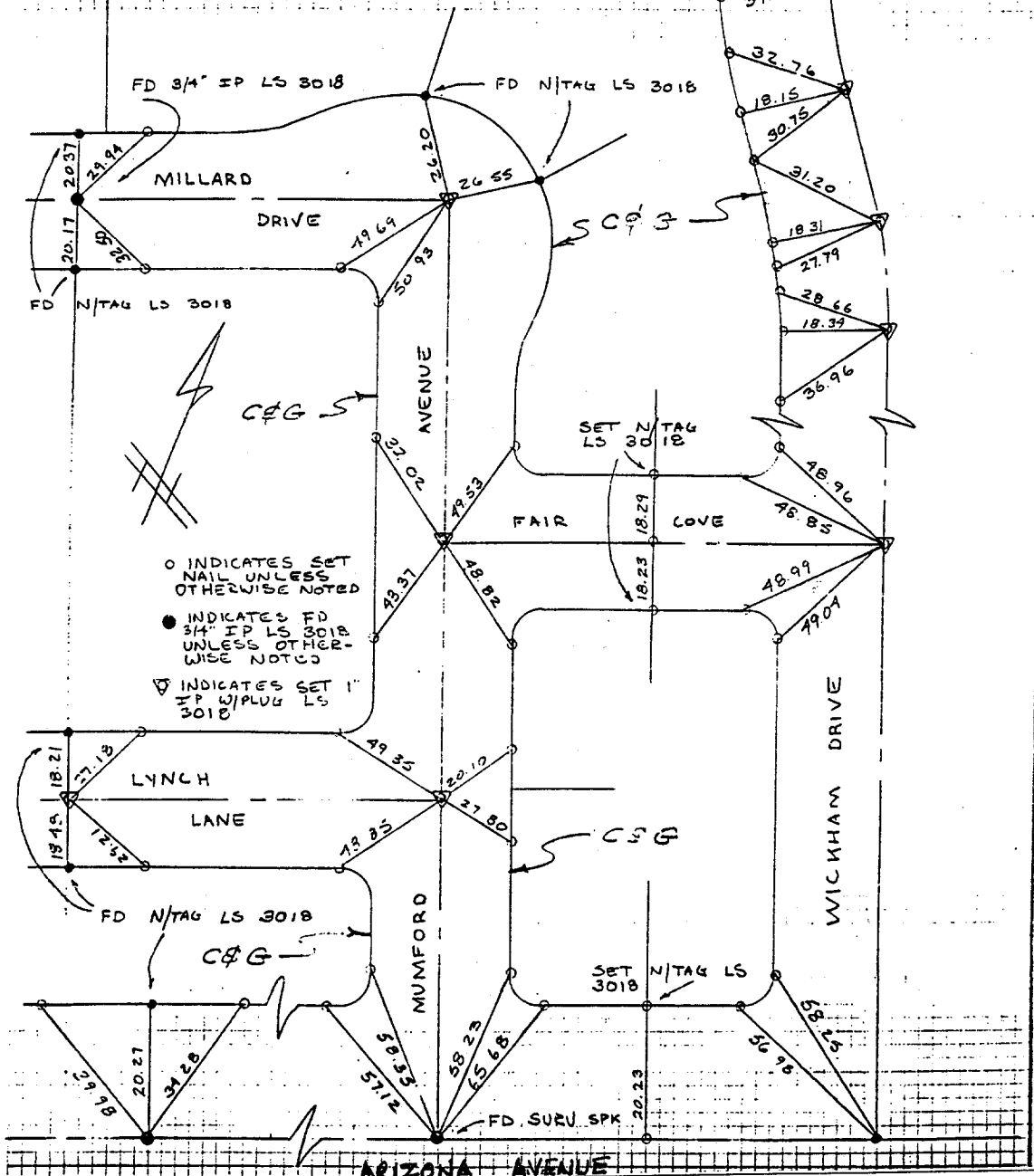
REF.

A.M.

FAIR COVE

SURVEY NOTES

NOTE:
 1. ALL IP W/PLUG LS 3018 AT ALL REAR CORNERS.
 2. FD N/TAG LS 3018 17.91/17
 3. FD SURV SPK 2 FLASH RESET 1" IP LS 3018



○ INDICATES SET NAIL UNLESS OTHERWISE NOTED
 ● INDICATES FD 3/4" IP LS 3018 UNLESS OTHERWISE NOTED
 △ INDICATES SET 1" IP W/PLUG LS 3018

× FD. Ramset Nail on T/C
 ■ FD. "C" Nail on T/C

● FD. LD. & TK. on T/C
 ○ Set LD. & TK. on T/C

**OFFICIAL TIE PLAT
 CITY OF RIVERSIDE**

These ties are for the purpose of perpetuating the found monumentation. No claim is made as to the relationship of the points or lines shown hereon to true boundary locations.

Street: FAIR COVE

OFFICIAL USE ONLY

X-Street: MUMFORD & WICKHAM DR

Scale:

Date:

Drawn by:

W.O.:

F.B.:

Sheet 1 of 1

File No.: