

314.71F

ARIZONA AVE AT VIEWCREST

SHEET NO. 1 3

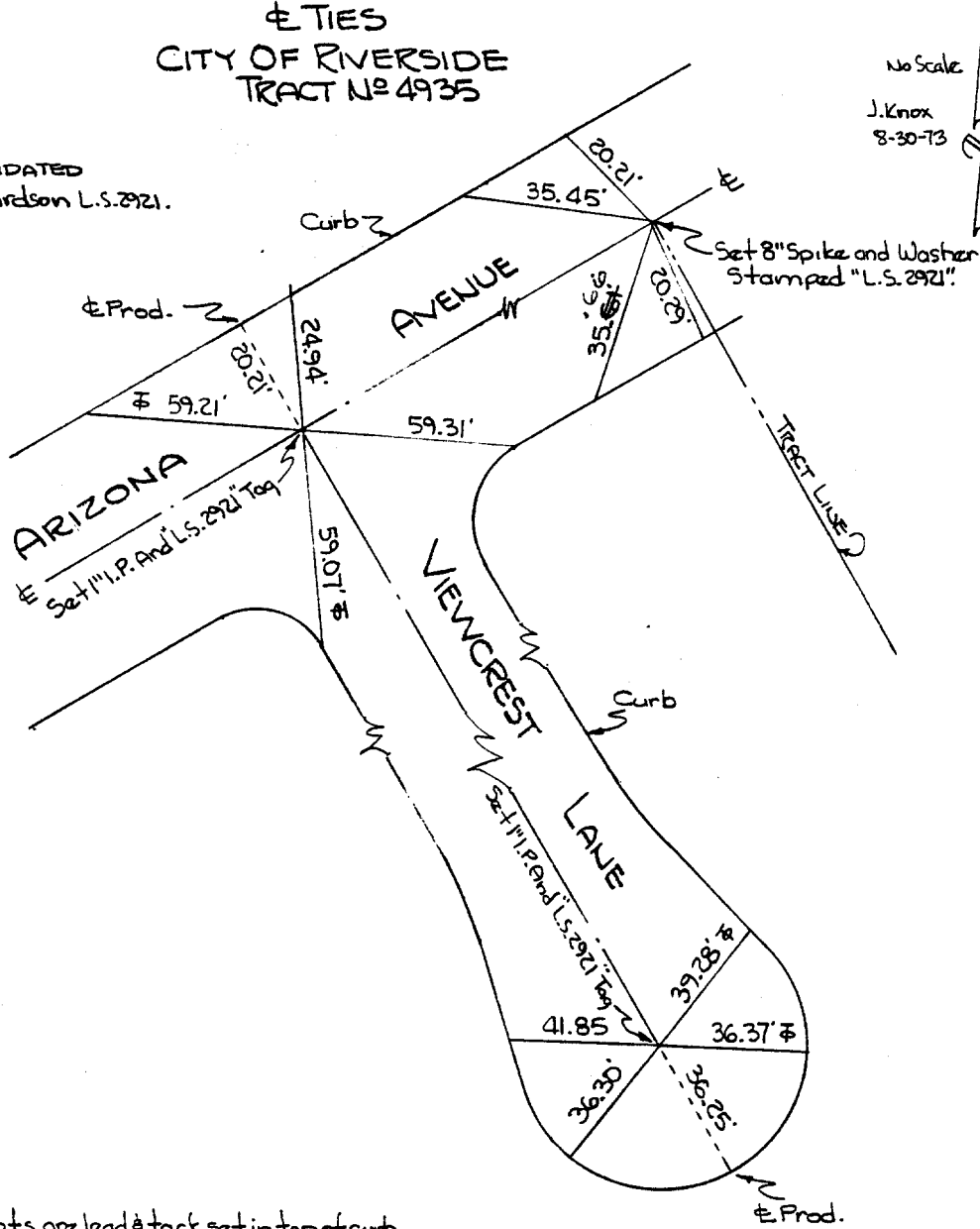
DB NO.

ETIES  
CITY OF RIVERSIDE  
TRACT NO 4935

No Scale

J. Knox  
8-30-73

VTN Consolidated  
Frank W. Richardson L.S. 2921.



Note:  
All tie points are lead & tack set in top of curb.

ARIZONA AVE  
View Crest Ln.

- ✕ FD. Ramset Nail on T/C
- FD. "C" Nail on T/C

- FD. LD. & TK. on T/C
- Set LD. & TK. on T/C

Street: ARIZONA AVE

X-Street: OFFICIAL USE ONLY

VIEW CREST LN.

Scale:  
Date:  
Drawn by:  
W.O.:  
F.B.:

OFFICIAL TIE PLAT  
CITY OF RIVERSIDE

These ties are for the purpose of perpetuating the found monumentation. No claim is made as to the relationship of the points or lines shown hereon to true boundary locations.

Sheet 1 of 1

File No.: