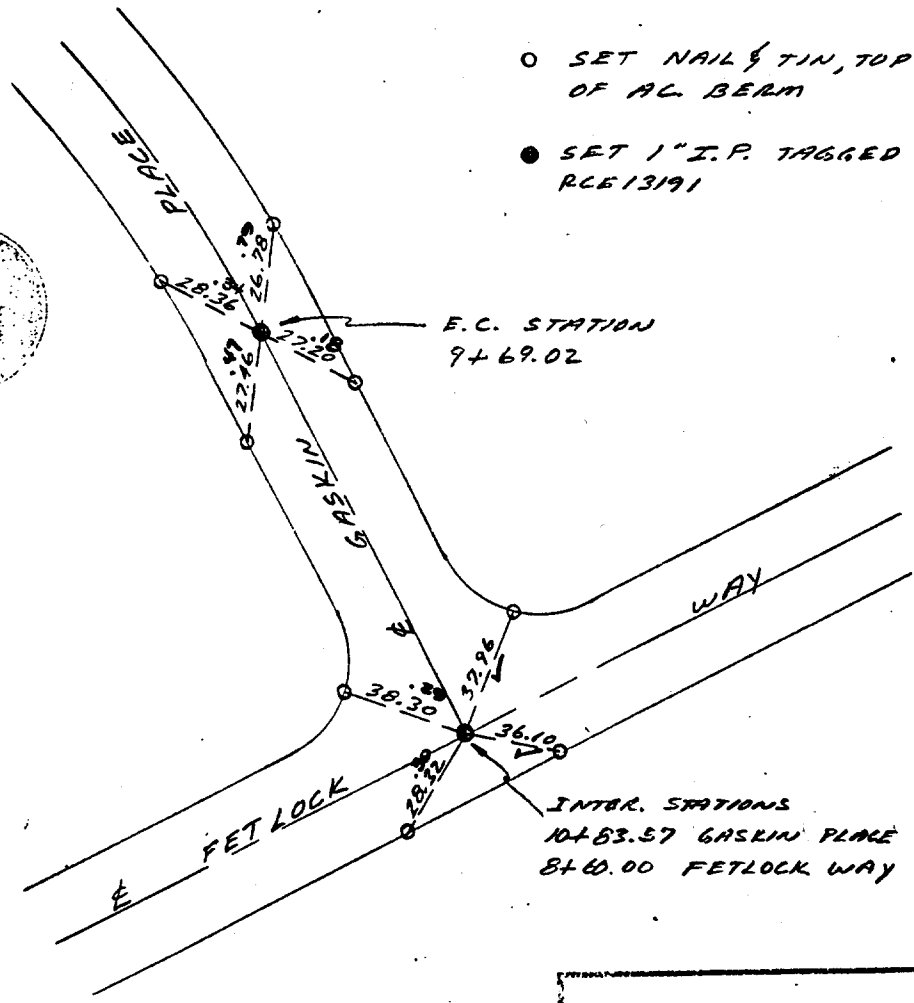


E TIES TRACT 7427

7 OF 10



- SET NAIL & TIN, TOP OF AL. BERM
- SET 1" I.P. TAGGED RCE13191

*L. L. Loring*  
 Loring Engineering

FETLOCK WAY @ Gaskin Pl.

- ✕ FD. Ramset Nail on T/C
- FD. LD. & TK. on T/C
- FD. "C" Nail on T/C
- Set LD. & TK. on T/C

Street: FETLOCK WAY

X-Street: GASKIN PLACE

OFFICIAL USE ONLY

Scale:  
 Date:  
 Drawn by:  
 W.O.:  
 F.B.:

**OFFICIAL TIE PLAT**  
**CITY OF RIVERSIDE**

*These ties are for the purpose of perpetuating the found monumentation. No claim is made as to the relationship of the points or lines shown hereon to true boundary locations.*

Sheet 1 of 1  
 File No.: