

3187 TIF

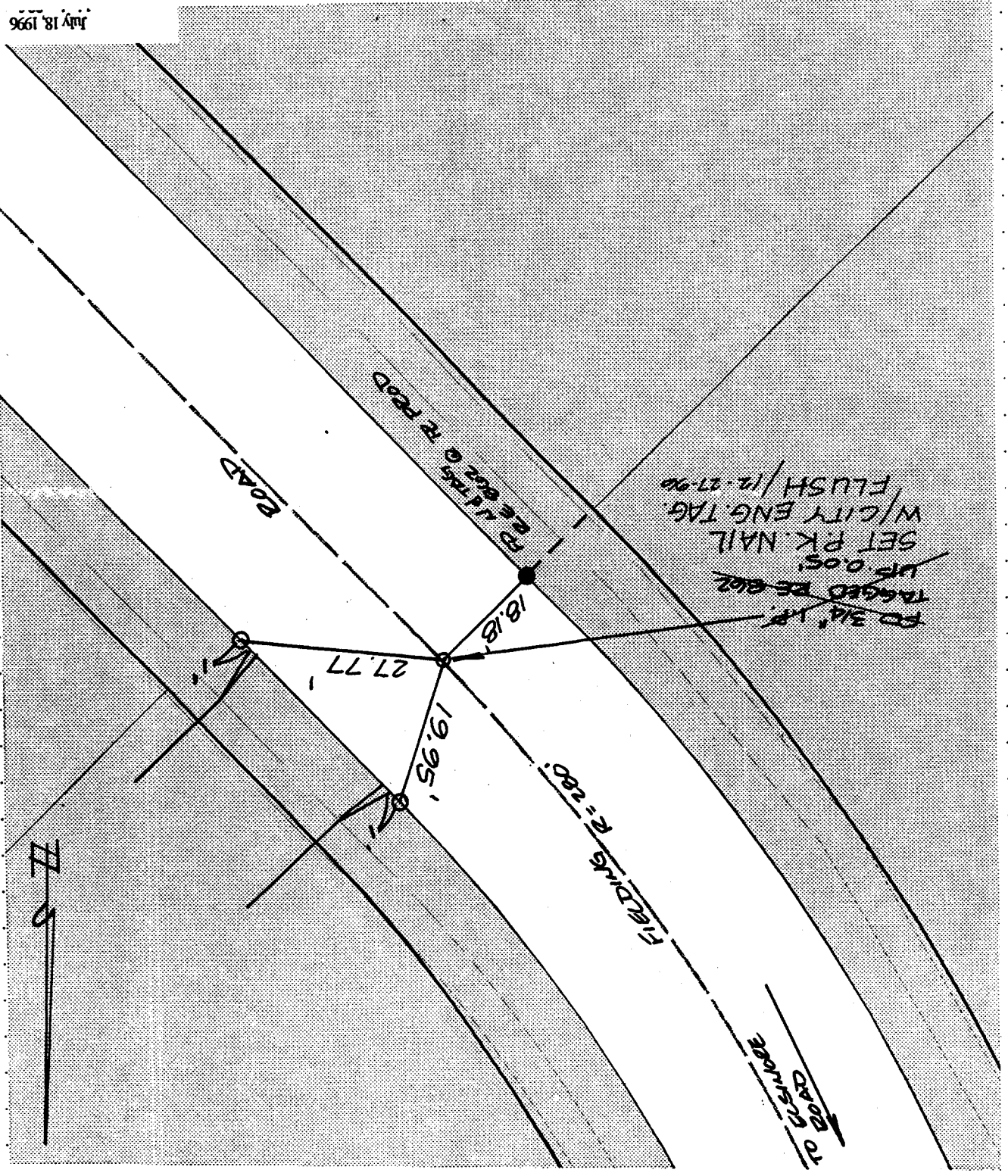
SCALE: 1"=20'
DATE: 12/96
DR. BY: CS.
W.O.:
F.B.:

OFFICIAL TIE PLAT
CITY OF RIVERSIDE
These ties are for the purpose of perpetuating the found
monumentation. No claim is made as to the relationship of
the points or lines shown hereon to true boundary locations.

FILE NO.:
OF SHEETS /
SHEET /

STREET FIELDS ROAD X-STREET 2ND ST W. SIDE OF ESCALANTE RD
OFFICE USE ONLY

● FD. LD. & TK. on T/C
○ SET LD. & TK. on T/C
X FD. Ramset Nail on T/C
■ FD. "C" Nail on T/C



SWING TIES

July 18, 1996