

3199. TIF

Street: FIG ST.

X-Street: OFFICIAL USE ONLY

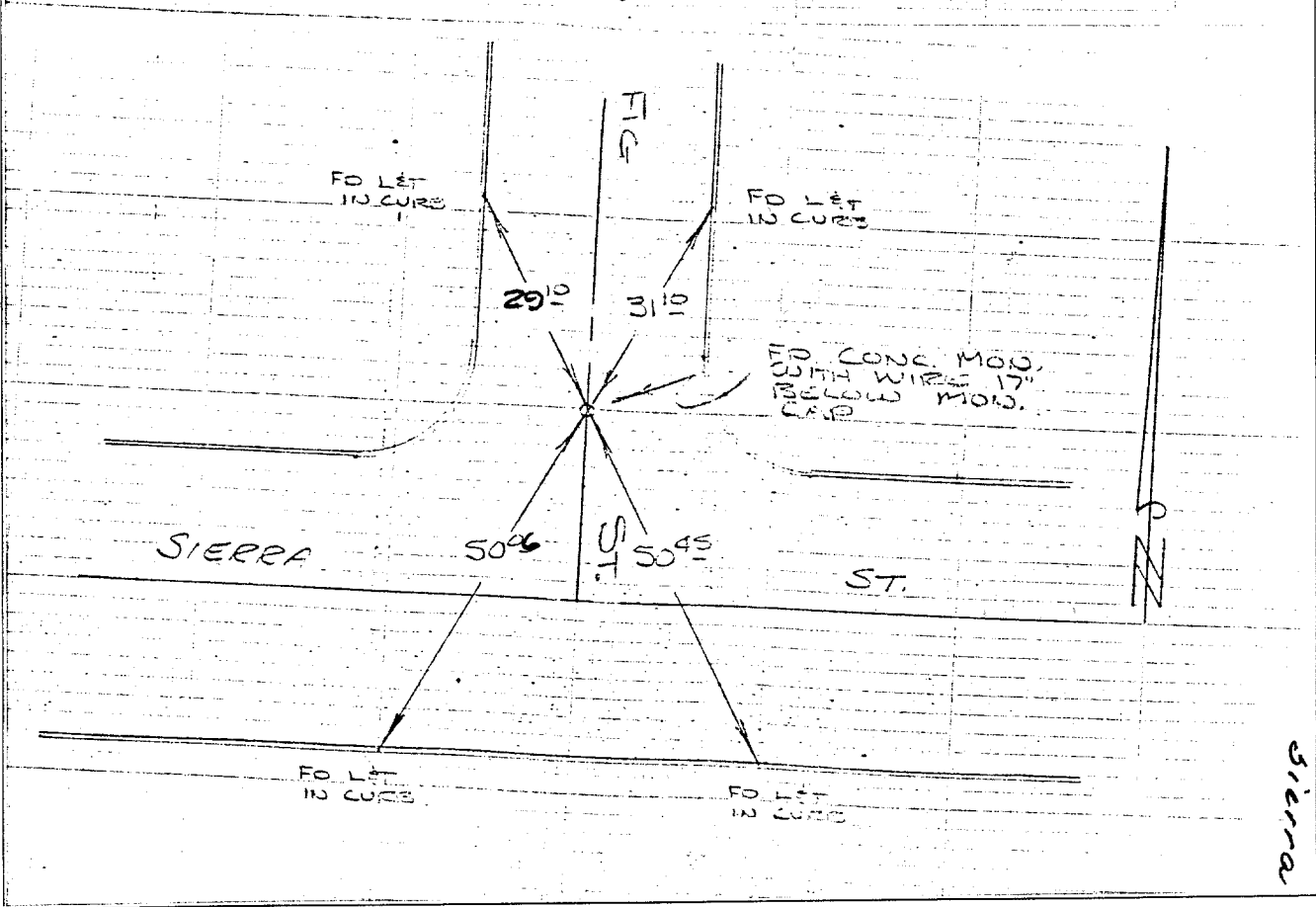
SIERRA ST.

FIG STREET  
AT SIERRA ST

HISTORICAL  
PLAT  
FB. 387/74

TRANSFER TIE

CREW:  
STEELE  
MORGAN  
JORDAN  
11-14-68  
FB. 833/19



- ✕ FD. Ramset Nail on T/C
- FD. "C" Nail on T/C

- FD. LD. & TK. on T/C
- Set LD. & TK. on T/C

Scale:  
Date:  
Drawn by:  
W.O.:  
F.B.:

**OFFICIAL TIE PLAT**  
**CITY OF RIVERSIDE**

*These ties are for the purpose of perpetuating the found monumentation. No claim is made as to the relationship of the points or lines shown hereon to true boundary locations.*

Sheet 1 of 1  
File No.: