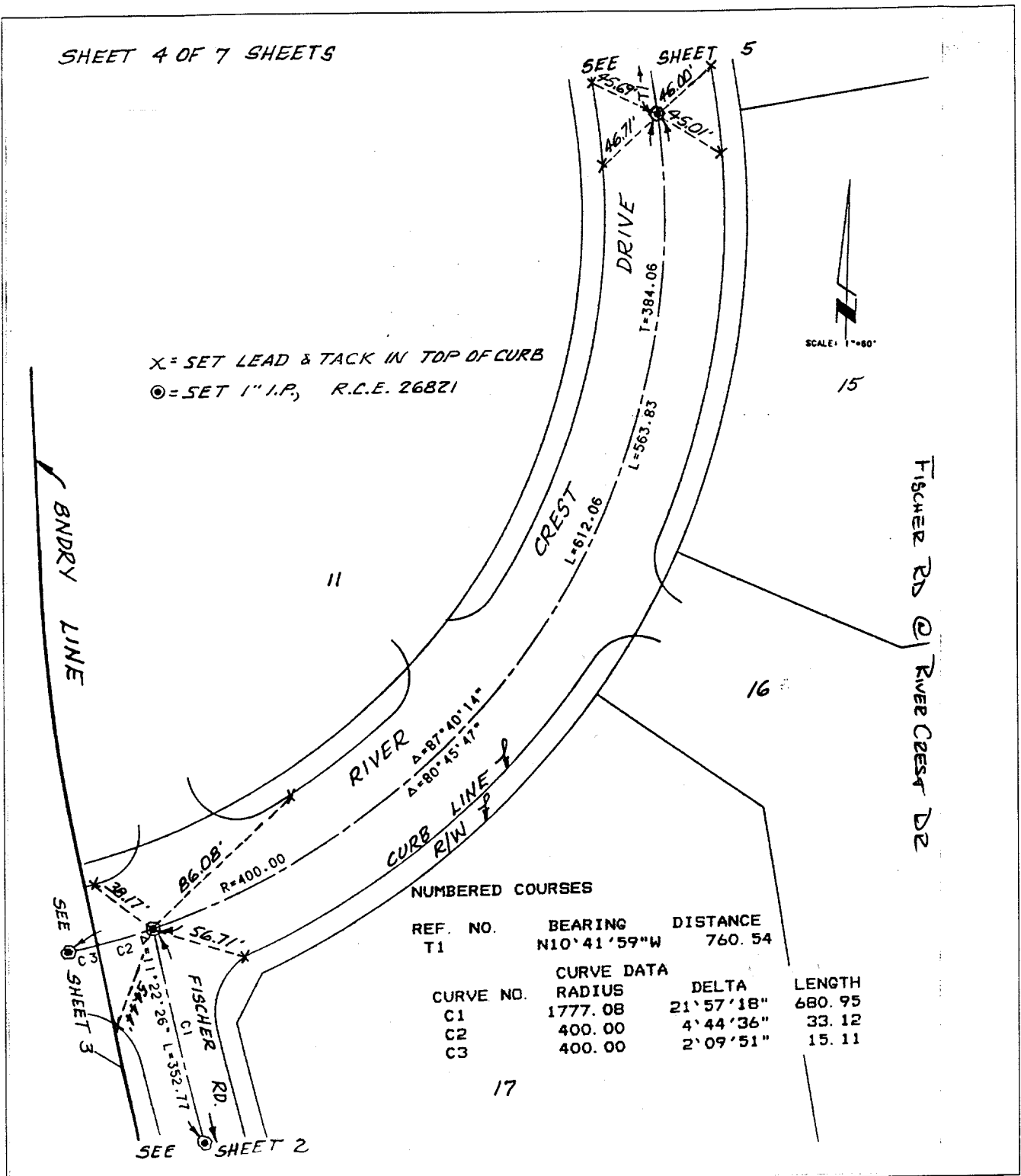


SHEET 4 OF 7 SHEETS



X = SET LEAD & TACK IN TOP OF CURB
 O = SET 1" I.P., R.L.E. 26821

SCALE: 1"=60'

NUMBERED COURSES

REF. NO.	BEARING	DISTANCE
T1	N10°41'59"W	760.54

CURVE NO.	RADIUS	DELTA	LENGTH
C1	1777.08	21°57'18"	680.95
C2	400.00	4°44'36"	33.12
C3	400.00	2°09'51"	15.11

17

- ✗ FD. Ramset Nail on T/C
- FD. LD. & TK. on T/C
- FD. "C" Nail on T/C
- Set LD. & TK. on T/C

Street: FISCHER RD

OFFICIAL USE ONLY

X-Street: RIVERCREST DR.

Scale:

Date:

Drawn by:

W.O.:

F.B.:

OFFICIAL TIE PLAT

CITY OF RIVERSIDE

These ties are for the purpose of perpetuating the found monumentation. No claim is made as to the relationship of the points or lines shown hereon to true boundary locations.

Sheet 1 of 1

File No.: