

Street: FLORENCE ST

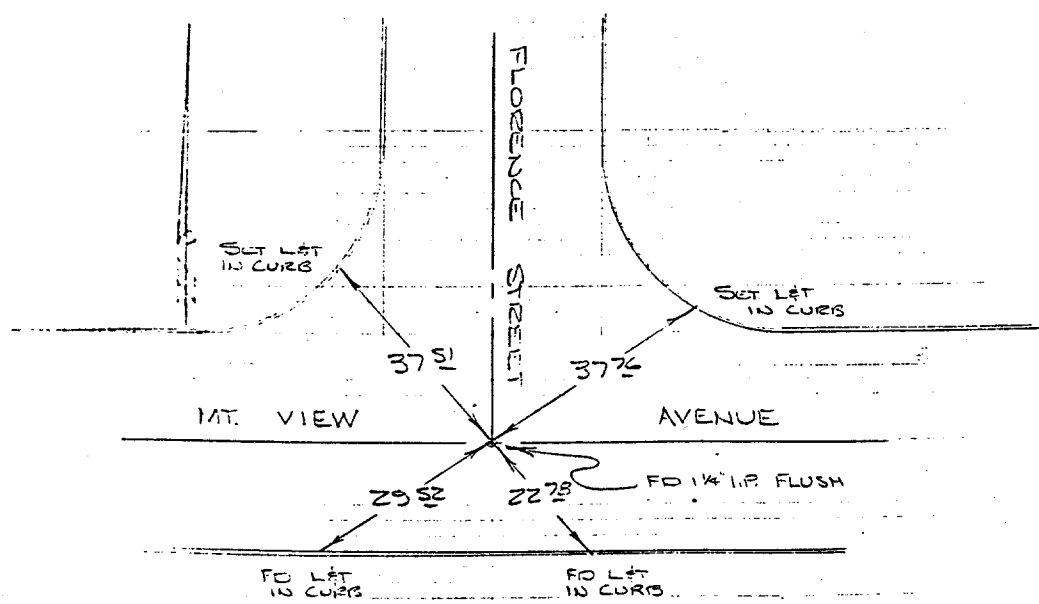
X-Street: MT. VIEW AVE  
OFFICIAL USE ONLY

HISTORICAL DATA  
F.B. 600/54

TRANSIT TIES:

CREW:  
STEELE  
THORP  
JORDAN  
5-15-09  
F.B. 809/10

FLORENCE STREET  
AT MT. VIEW AVENUE



FLORENCE ST  
C.R.F.B. 869/10  
@ Mt. View Ave.

- ✕ FD. Ramset Nail on T/C
- FD. LD. & TK. on T/C
- FD. "C" Nail on T/C
- Set LD. & TK. on T/C

**OFFICIAL TIE PLAT**  
CITY OF RIVERSIDE

*These ties are for the purpose of perpetuating the found monumentation. No claim is made as to the relationship of the points or lines shown hereon to true boundary locations.*

Scale:  
Date:  
Drawn by:  
W.O.:  
F.B.:

Sheet 1 of 1  
File No.: