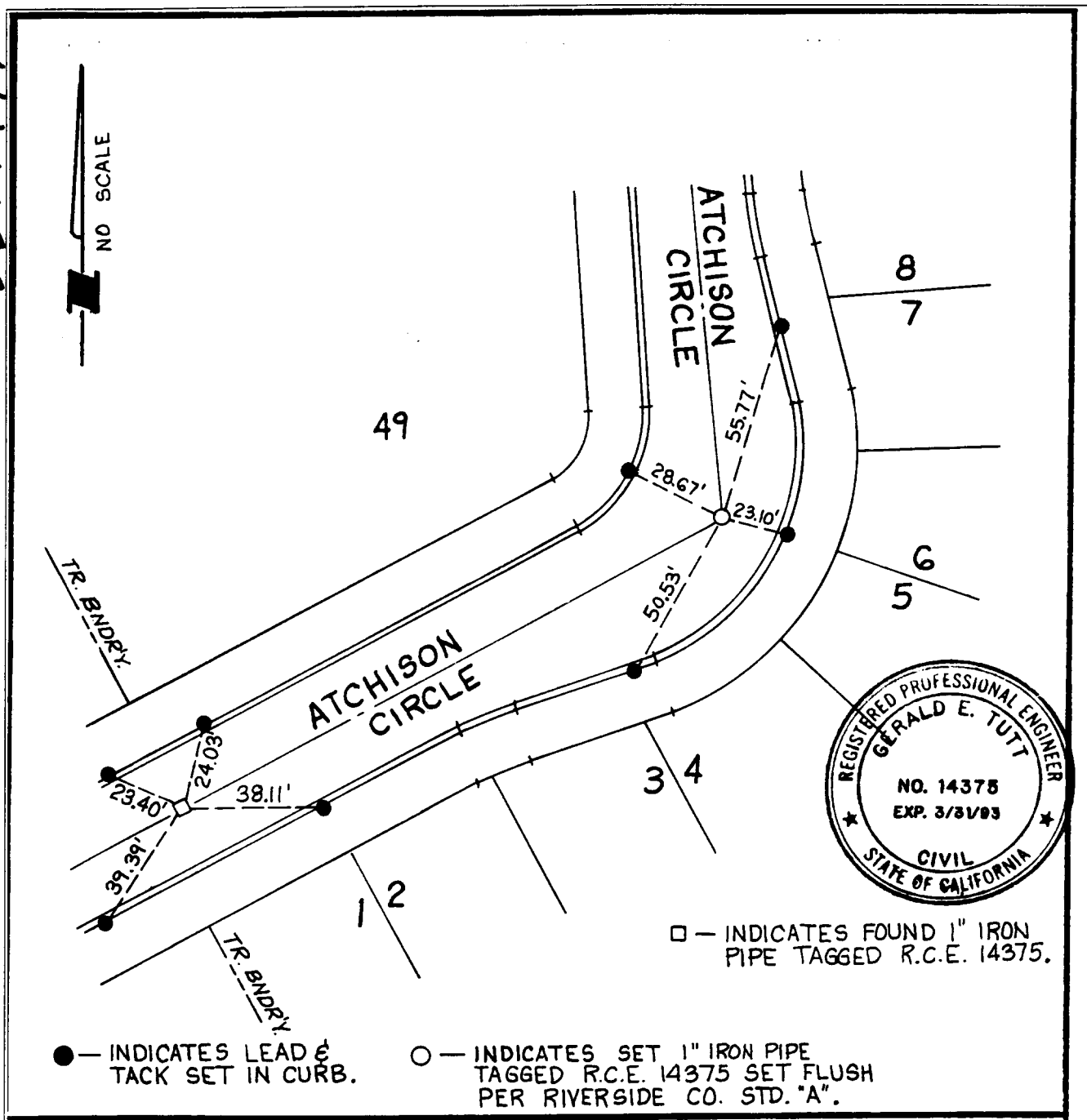


Street: **ATCHISON CIRCLE**

OFFICIAL USE ONLY

X-Street:

717-155



□ — INDICATES FOUND 1" IRON PIPE TAGGED R.C.E. 14375.

● — INDICATES LEAD & TACK SET IN CURB.

○ — INDICATES SET 1" IRON PIPE TAGGED R.C.E. 14375 SET FLUSH PER RIVERSIDE CO. STD. "A".

COUNTY OF RIVERSIDE

McCUTCHAN CO., INC.

TRACT NO. 19825

× FD. Ramset Nail on T/C
 ■ FD. "C" Nail on T/C

● FD. LD. & TK. on T/C
 ○ Set LD. & TK. on T/C

Scale:
 Date:
 Drawn by:
 W.O.:
 F.B.:

OFFICIAL TIE PLAT
CITY OF RIVERSIDE

These ties are for the purpose of perpetuating the found monumentation. No claim is made as to the relationship of the points or lines shown hereon to true boundary locations.

Sheet 1 of 1
 File No.: