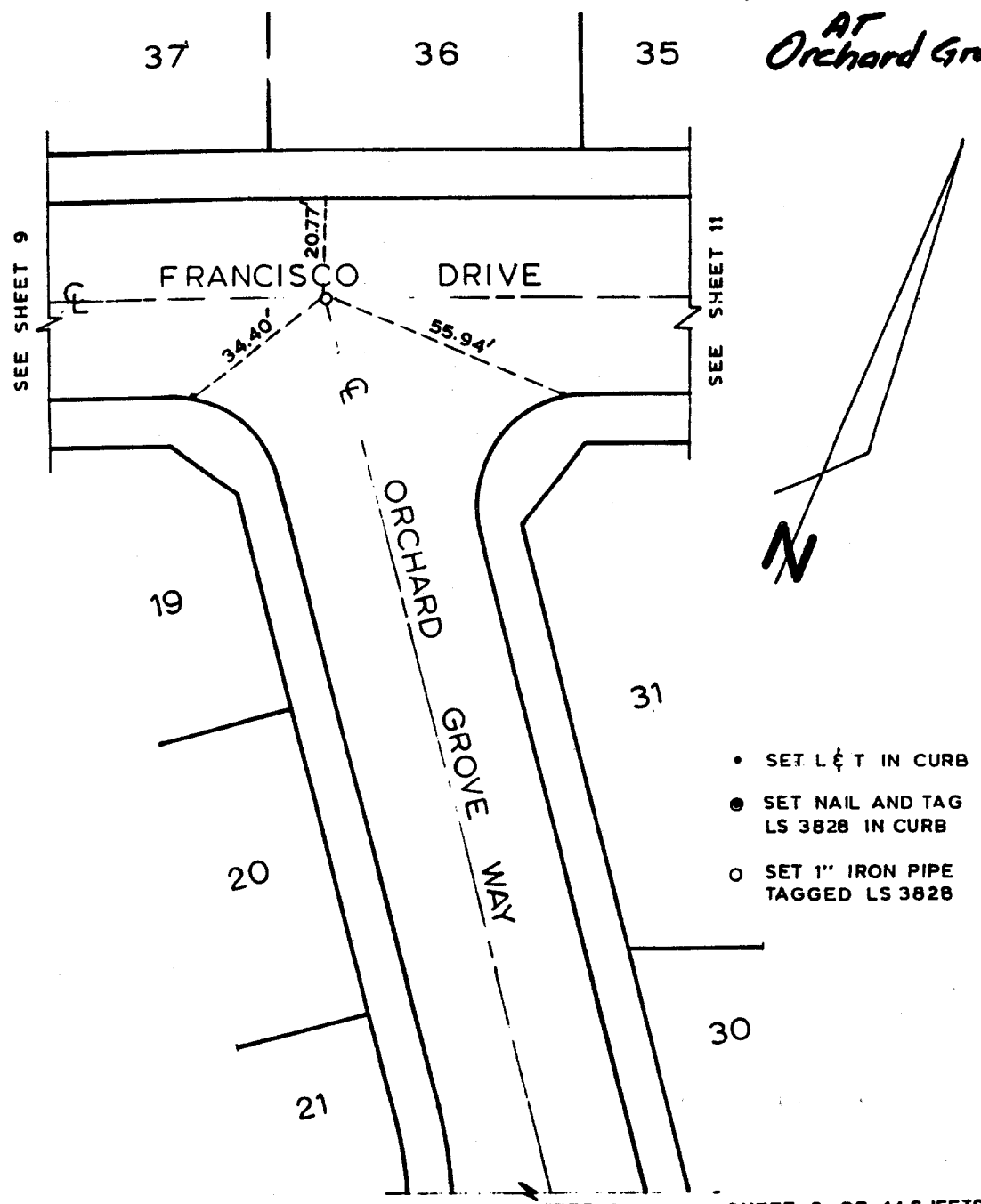


Street: FRANCISCO DR  
 X-Street: ORCHARD GROVE WAY  
 OFFICIAL USE ONLY

Francisco  
 AT  
 Orchard Grove



- SET L & T IN CURB
- SET NAIL AND TAG LS 3828 IN CURB
- SET 1" IRON PIPE TAGGED LS 3828

TIES MADE DATE: SEE SHEET 7 SHEET 8 OF 14 SHEETS

IRBY, LANGONE & Associates  
 LAND SURVEYORS & CIVIL ENGINEERS  
 495 W. Valley Blvd., Colton, CA. 92324  
 (714) 825-8309

CITY OF RIVERSIDE

TRACT No. 22108-1

- ✕ FD. Ramset Nail on T/C
- FD. "C" Nail on T/C
- FD. LD. & TK. on T/C
- Set LD. & TK. on T/C

Scale:  
 Date:  
 Drawn by:  
 W.O.:  
 F.B.:

**OFFICIAL TIE PLAT**  
 CITY OF RIVERSIDE

*These ties are for the purpose of perpetuating the found monumentation. No claim is made as to the relationship of the points or lines shown hereon to true boundary locations.*

Sheet 1 of 1  
 File No.: