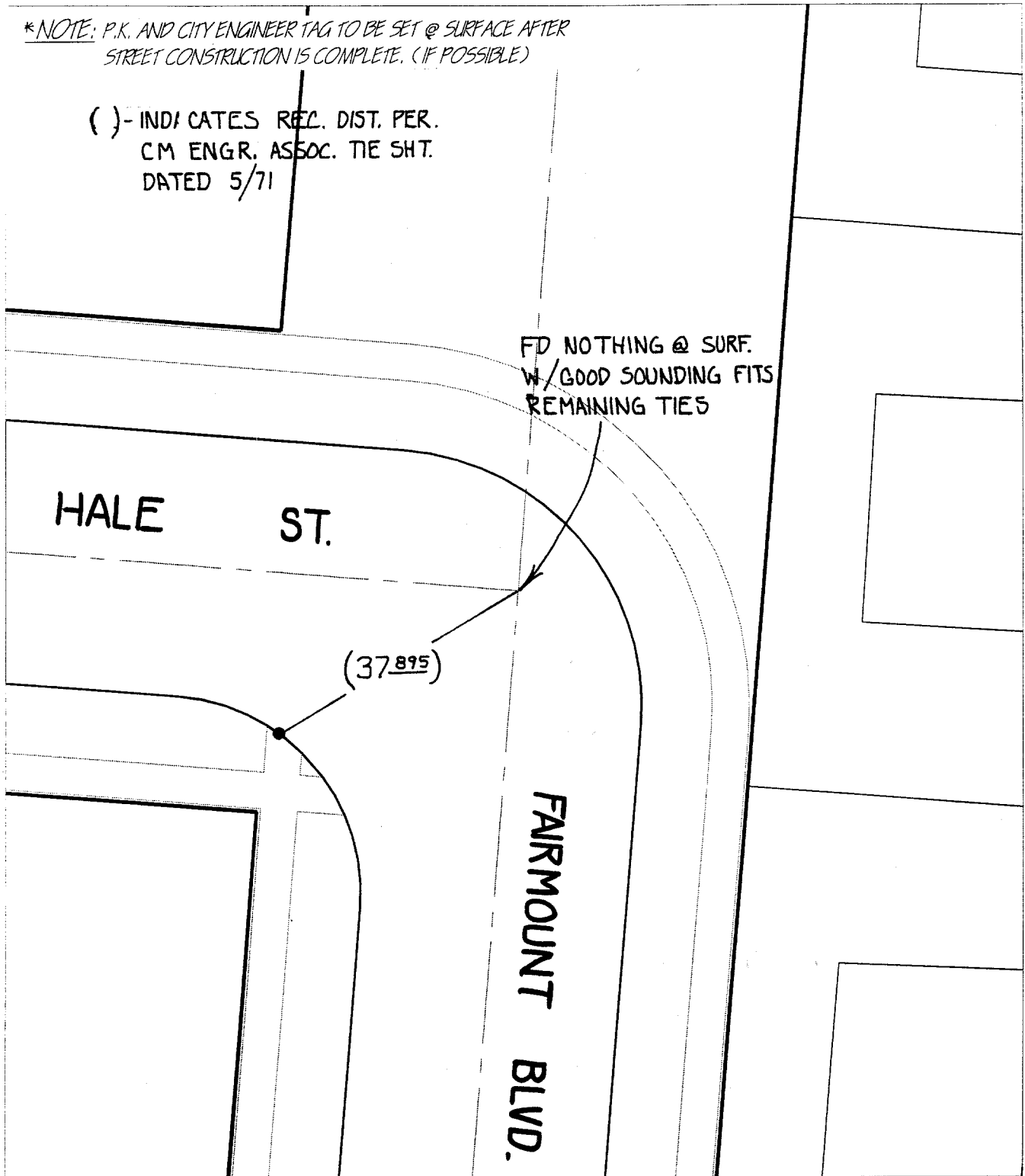


SWING TIES 3345.T1F

*NOTE: P.K. AND CITY ENGINEER TAG TO BE SET @ SURFACE AFTER STREET CONSTRUCTION IS COMPLETE. (IF POSSIBLE)

() - INDICATES REC. DIST. PER. CM ENGR. ASSOC. TIE SHT. DATED 5/71

FD NOTHING @ SURF. W/GOOD SOUNDING FITS REMAINING TIES



✕ FD. Ramset Nail on T/C
 ■ FD. "C" Nail on T/C

● FD. LD. & TK. on T/C
 ○ Set LD. & TK. on T/C

Street:

FAIRMOUNT BLVD.

X-Street:
OFFICIAL USE ONLY

HALE ST.

Scale: 1" = 20'

Date: 06/13/00

Drawn by: SURVEY

W.O.:

F.B.:

OFFICIAL TIE PLAT CITY OF RIVERSIDE

These ties are for the purpose of perpetuating the found monumentation. No claim is made as to the relationship of the points or lines shown hereon to true boundary locations.



Sheet 1 of 1

File No.: