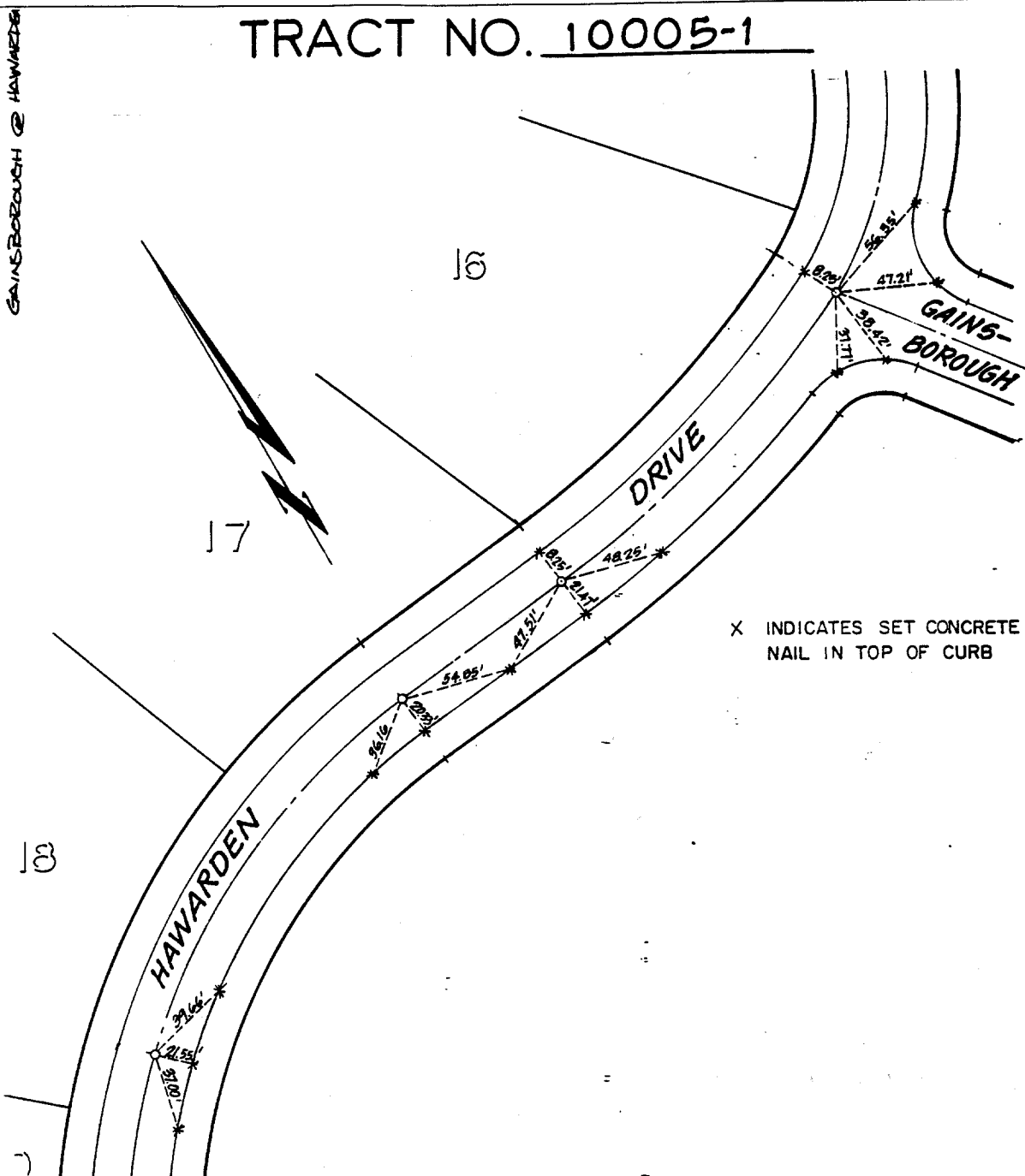


TRACT NO. 10005-1

GAINSBOROUGH @ HAWARDE



X INDICATES SET CONCRETE NAIL IN TOP OF CURB

**HAWKINS, ROBERTSON & ASSOC.**  
ENGINEERS & SURVEYORS  
RIVERSIDE, CALIF. 92506 3784 ELIZABETH STREET PH. 684-0622

DRWN BY: A.V.C. DATE: 4.9.87  
W.O. 3618 SCALE: NONE

- $\times$  FD. Ramset Nail on T/C
- $\bullet$  FD. LD. & TK. on T/C
- $\blacksquare$  FD. "C" Nail on T/C
- $\circ$  Set LD. & TK. on T/C

Street: GAINSBOROUGH

OFFICIAL USE ONLY

X-Street: HAWARDE DR.

Scale: \_\_\_\_\_  
Date: \_\_\_\_\_  
Drawn by: \_\_\_\_\_  
W.O.: \_\_\_\_\_  
F.B.: \_\_\_\_\_

**OFFICIAL TIE PLAT**  
CITY OF RIVERSIDE

*These ties are for the purpose of perpetuating the found monumentation. No claim is made as to the relationship of the points or lines shown hereon to true boundary locations.*

Sheet 1 of 1  
File No.: \_\_\_\_\_