

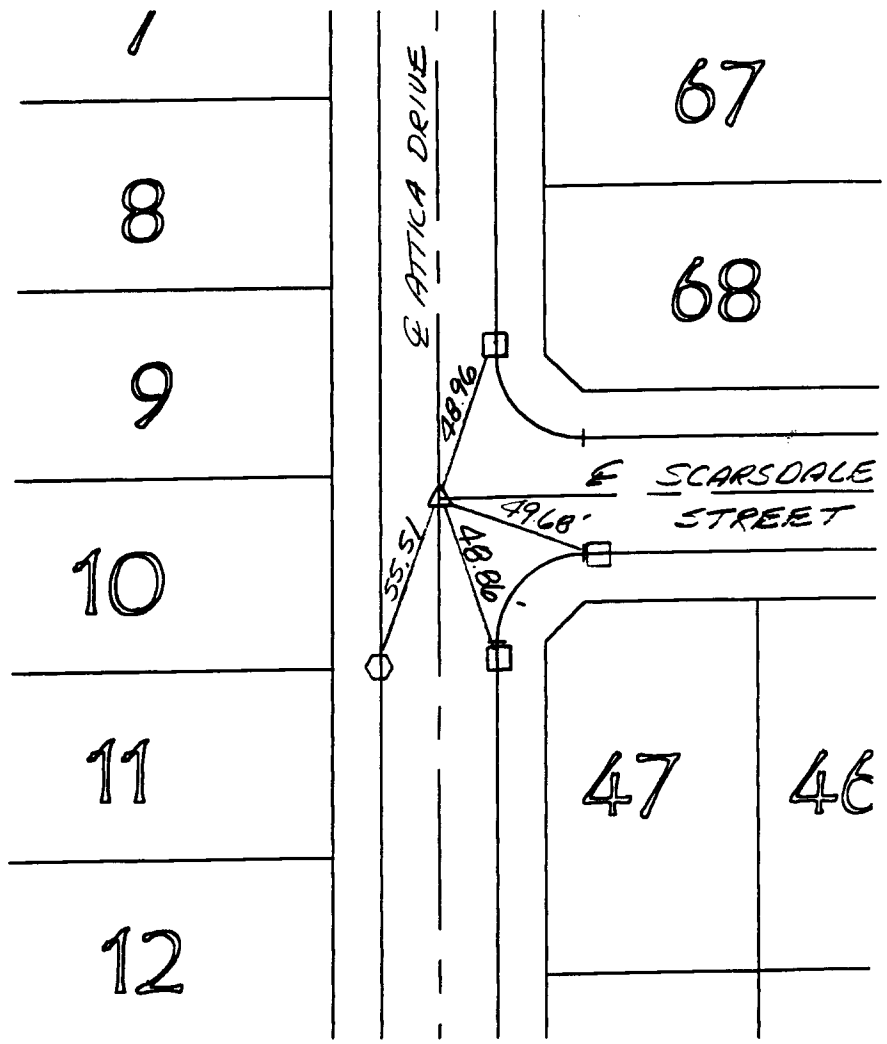
Street: ATTICA DR. X-Street: SCARSDALE ST.

OFFICIAL USE ONLY



- △ SPIKE & RCE 17550 TAG, FLUSH
- NAIL & RCE 17550 TAG, FLUSH
- RAMSET NAIL, FLUSH

340.71F



- × FD. Ramset Nail on T/C
- FD. "C" Nail on T/C

- FD. LD. & TK. on T/C
- Set LD. & TK. on T/C

Scale:
 Date: 1-18-00
 Drawn by: C.E.G.
 W.O.: TR. 21709-1
 F.B.:

OFFICIAL TIE PLAT

CITY OF RIVERSIDE

These ties are for the purpose of perpetuating the found monumentation. No claim is made as to the relationship of the points or lines shown hereon to true boundary locations.

Sheet 1 of 1
 File No.: