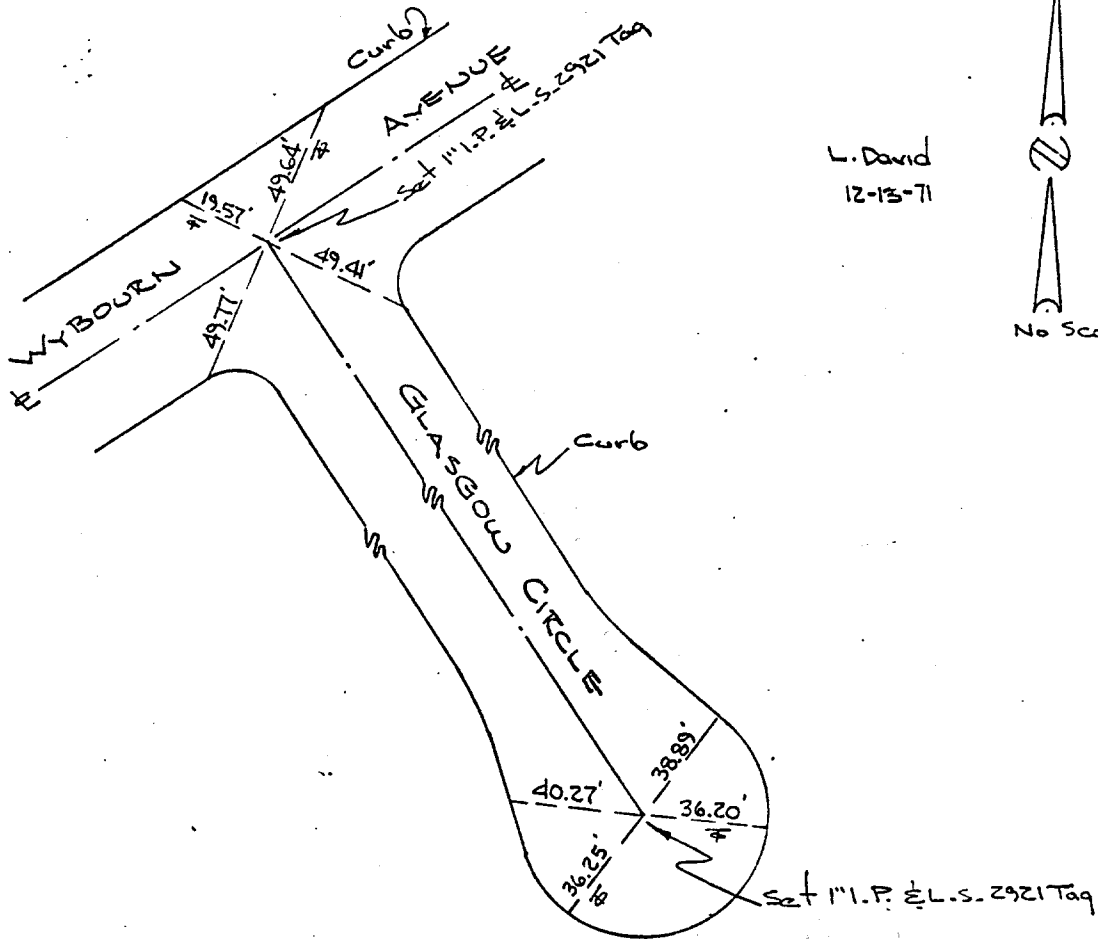
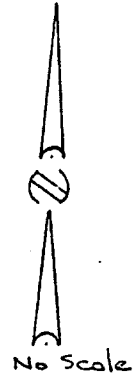


± TIES
CITY OF RIVERSIDE
TRACT 3651

V.T.N.
Frank W. Richardson L.S. 2921



L. David
12-13-71



WYBOURN

Note:
All ties are lead & tack set
in top of curb.

- ✕ FD. Ramset Nail on T/C
- FD. "C" Nail on T/C

- FD. LD. & TK. on T/C
- Set LD. & TK. on T/C

Scale:
Date:
Drawn by:
W.O.:
F.B.:

OFFICIAL TIE PLAT
CITY OF RIVERSIDE

These ties are for the purpose of perpetuating the found monumentation. No claim is made as to the relationship of the points or lines shown hereon to true boundary locations.

Sheet 1 of 1
File No.:

Street: GLASGOW Circle X-Street: Wybourn Ave
OFFICIAL USE ONLY