

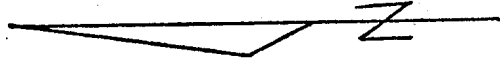
3437.TIF

TB5/57

TB5/057

RIV. COUNTY  
FB. 788P. 28

T2S R4W SEC. 7

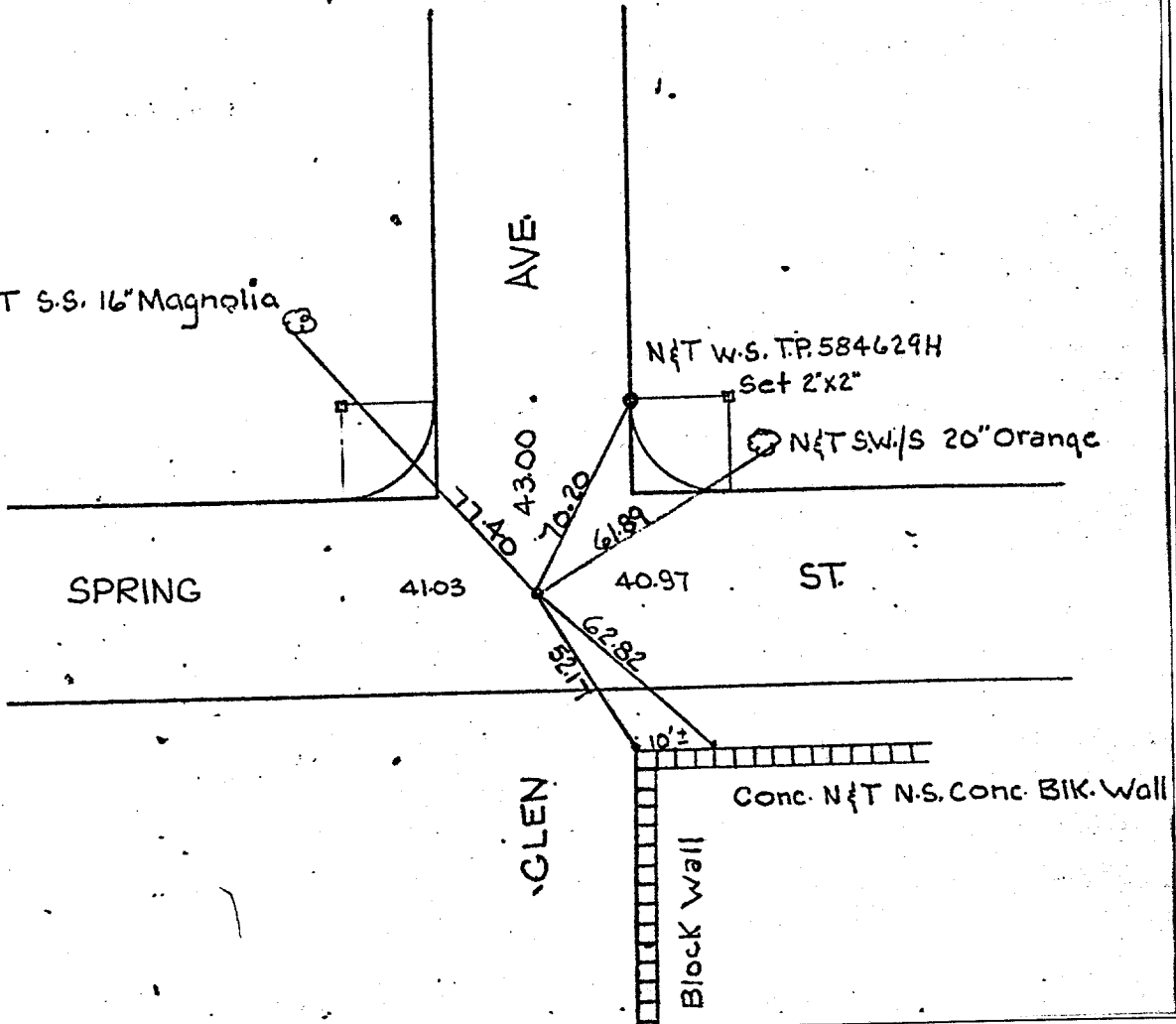


N&T S.S. 16" Magnolia

N&T W.S. TP. 584629H

Set 2"x2"

N&T S.W./S 20" Orange



- × FD. Ramset Nail on T/C
- FD. "C" Nail on T/C

- FD. LD. & TK. on T/C
- Set LD. & TK. on T/C

Street: GLEN AVE

OFFICIAL USE ONLY

X-Street: SPRING ST.

Scale:

Date:

Drawn by:

W.O.:

F.B.:

### OFFICIAL TIE PLAT CITY OF RIVERSIDE

*These ties are for the purpose of perpetuating the found monumentation. No claim is made as to the relationship of the points or lines shown hereon to true boundary locations.*

Sheet 1 of 1

File No.: