

3462.TIF

SURVEYED BY: GLENHAVEN AVE 2ND  
S.C.E.C. N'LY OF BENEDICT AVE.  
SURVEYED BY: GARDEN FAUG-BELDEN

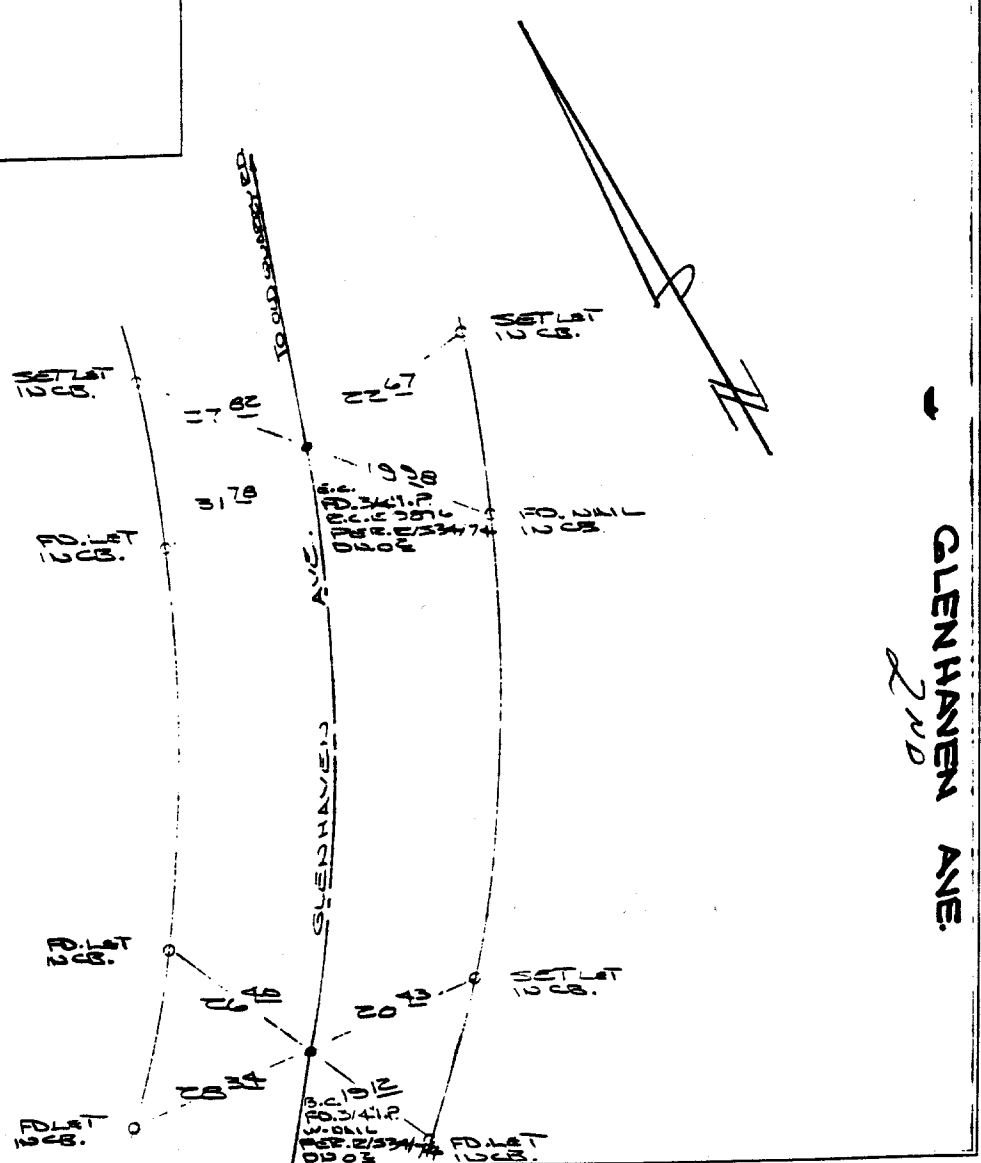
PAGE

JUNE 17, 1985

HISTORICAL DATA
E/S 3/24/74
L/L 5/26

TRANSIT TIES

SERVCO NO 7036



Street: GLENHAVEN AVE  
X-Street: BC N'LY OF BENEDICT AVE  
OFFICIAL USE ONLY

- ✕ FD. Ramset Nail on T/C
- FD. "C" Nail on T/C

- FD. LD. & TK. on T/C
- Set LD. & TK. on T/C

Scale:  
Date:  
Drawn by:  
W.O.:  
F.B.:

## OFFICIAL TIE PLAT

### CITY OF RIVERSIDE

*These ties are for the purpose of perpetuating the found monumentation. No claim is made as to the relationship of the points or lines shown hereon to true boundary locations.*

Sheet 1 of 1  
File No.: