

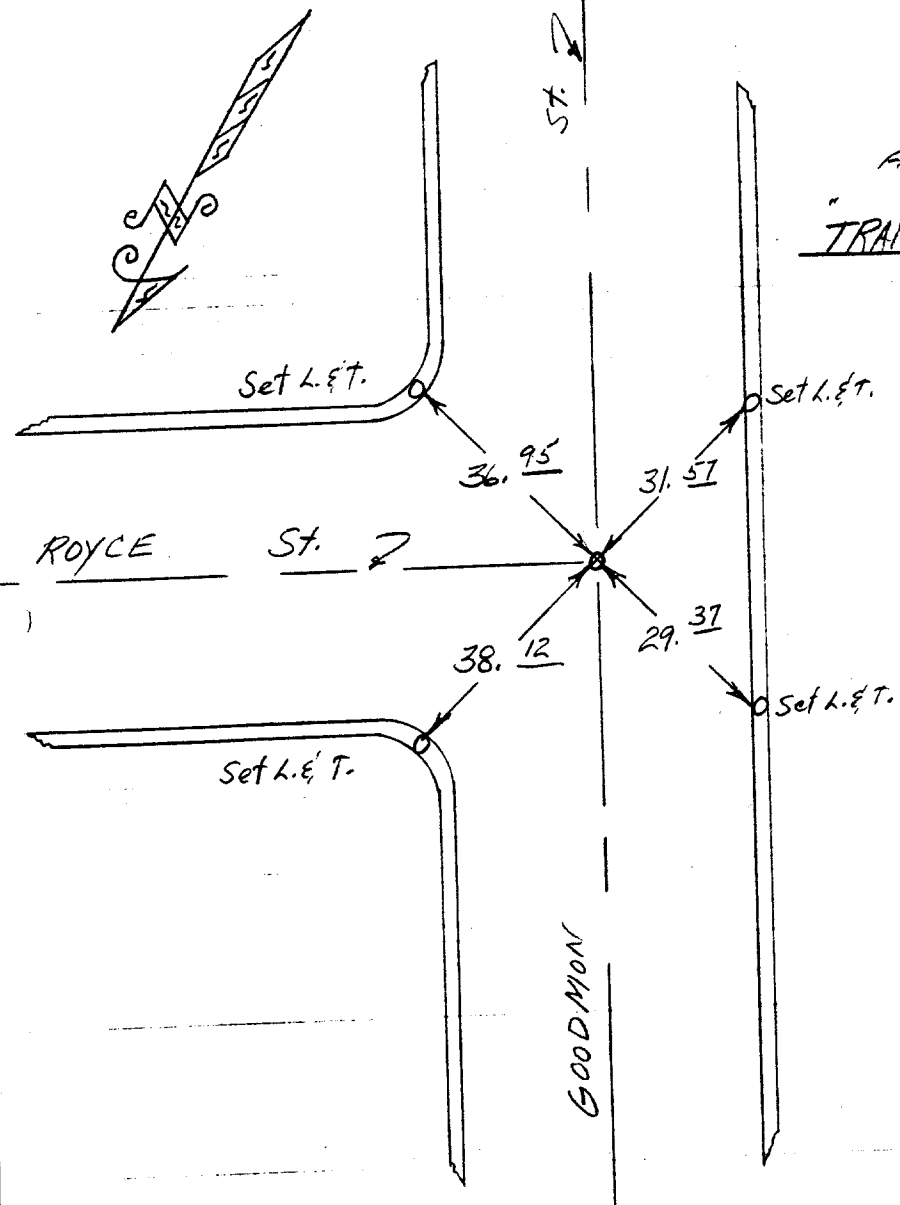
Street: ~~Goodman St~~ Goodman St X-Street: Royce St.
 OFFICIAL USE ONLY

120 03 4571.

(P)

10-27-61
 F.B. 625/66

"TRANSIT TIES"



GOODMAN ST.
 @ Royce St.

FIELD CHECK
 5-14-65
 F.B. 4

- ✗ FD. Ramset Nail on T/C
- FD. "C" Nail on T/C

- FD. LD. & TK. on T/C
- Set LD. & TK. on T/C

Scale: _____
 Date: _____
 Drawn by: _____
 W.O.: _____
 F.B.: _____

OFFICIAL TIE PLAT
CITY OF RIVERSIDE

These ties are for the purpose of perpetuating the found monumentation. No claim is made as to the relationship of the points or lines shown hereon to true boundary locations.

Sheet 1 of 1
 File No.: _____