

Street:

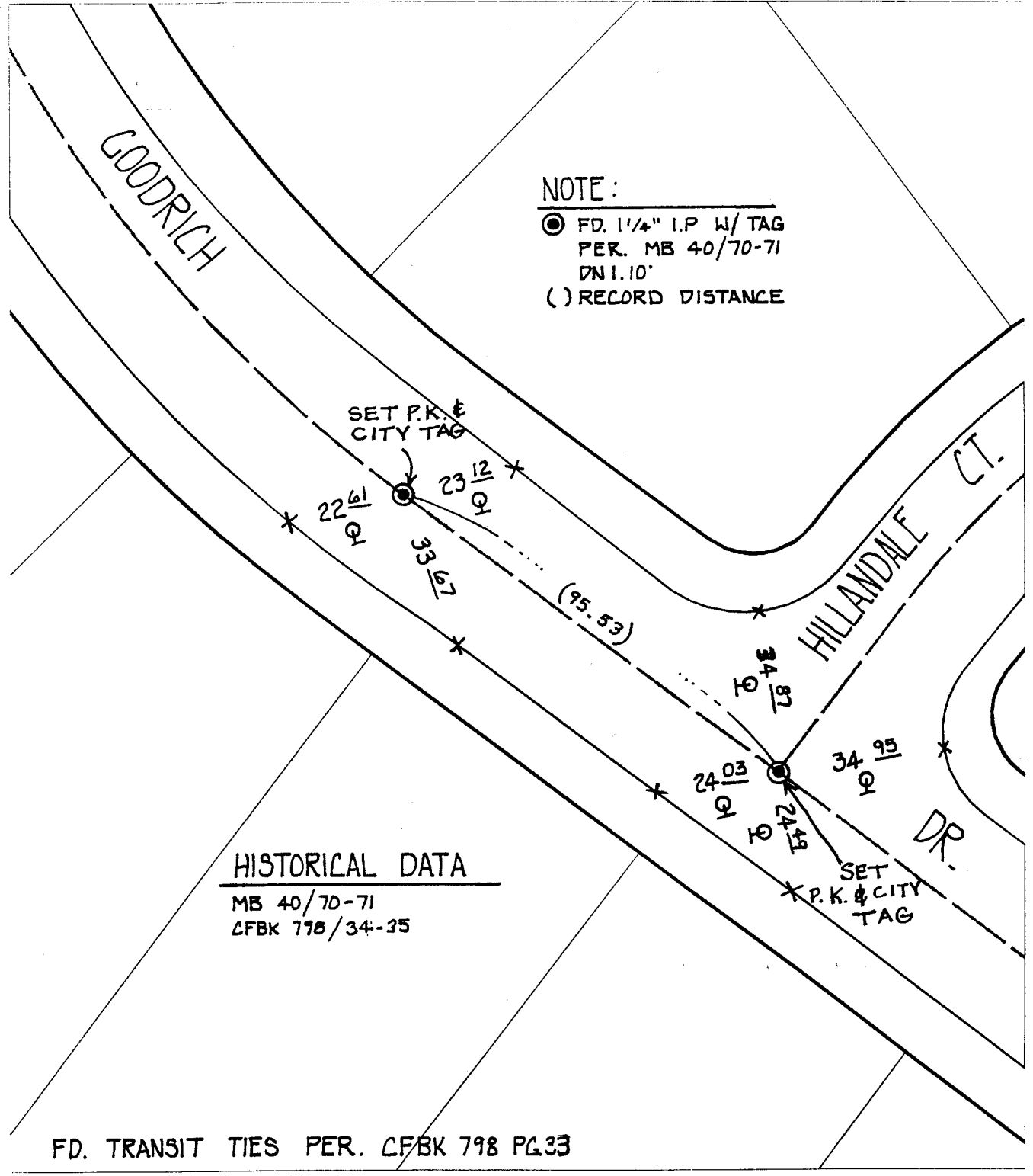
GOODRICH DR.

X-Street:  
OFFICIAL USE ONLY

HILLDALE CT.

NOTE:

- FD. 1 1/4" I.P. W/ TAG  
PER. MB 40/70-71  
DN 1.10'
- ( ) RECORD DISTANCE



HISTORICAL DATA

MB 40/70-71  
CFBK 778/34-35

FD. TRANSIT TIES PER. CFBK 798 PG.33

- × FD. Ramset Nail on T/C
- FD. LD. & TK. on T/C
- FD. "C" Nail on T/C
- Set LD. & TK. on T/C

Scale: 1" = 30'  
 Date: ~~10/28/99~~ 8/24/00  
 Drawn by: L. Harris  
 W.O.:  
 F.B.:

**OFFICIAL TIE PLAT**  
 CITY OF RIVERSIDE

*These ties are for the purpose of perpetuating the found monumentation. No claim is made as to the relationship of the points or lines shown hereon to true boundary locations.*



Sheet 1 of 1  
 File No.: