

Street: GRANADA AVE. X-Street: B.C.  
 OFFICIAL USE ONLY

Scale: 1" = 20'  
 Date: 09/25/97  
 Drawn by: scurtis  
 W.O.:  
 F.B.:

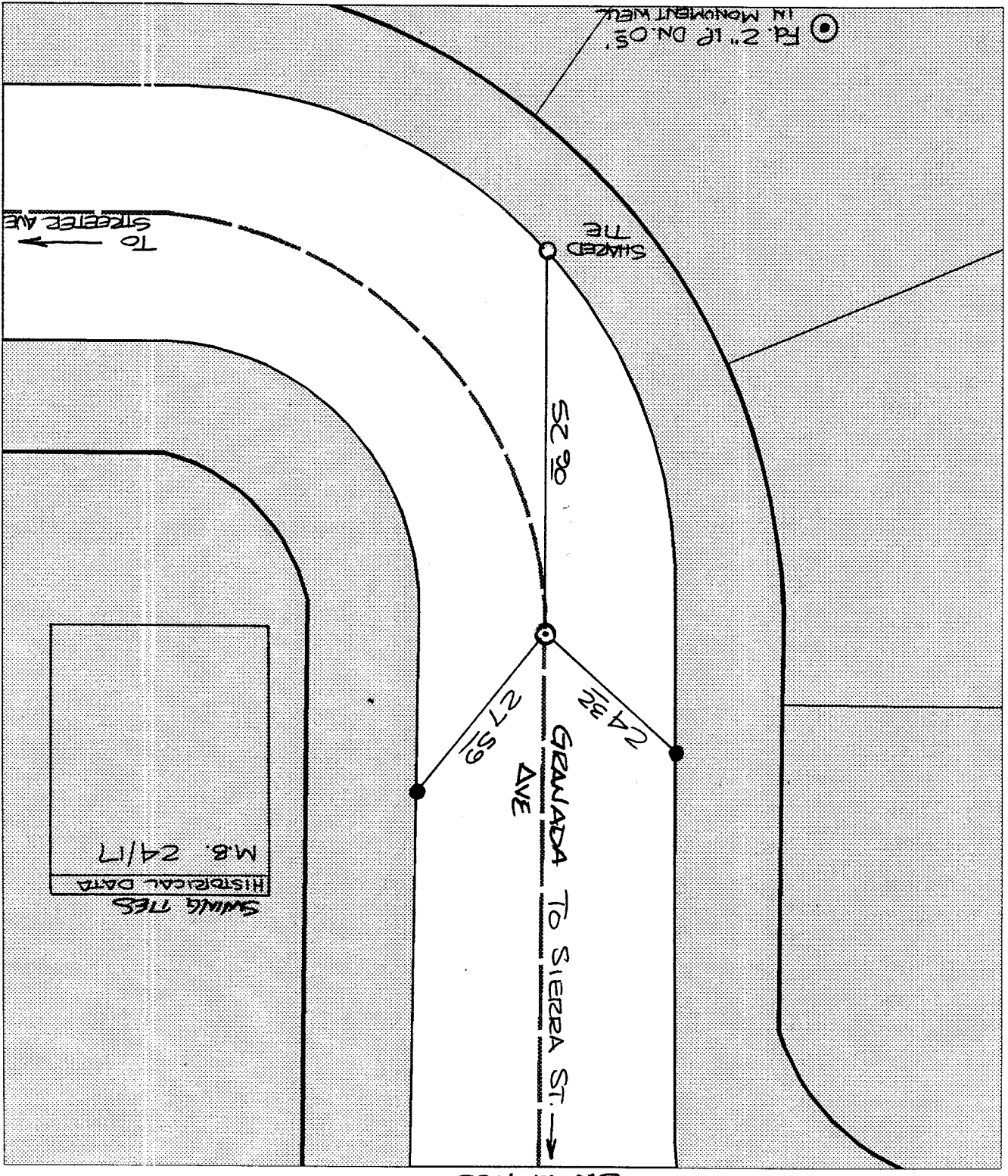
**OFFICIAL TIE PLAT**  
**CITY OF RIVERSIDE**  
 These ties are for the purpose of perpetuating the found  
 monumentation. No claim is made as to the relationship of  
 the points or lines shown hereon to true boundary locations.



File No.:

Sheet 1 of 1

- FD. LD. & TK. on T/C
- Set LD. & TK. on T/C
- FD. "C" Nail on T/C
- × FD. Ramset Nail on T/C



SWING TIES