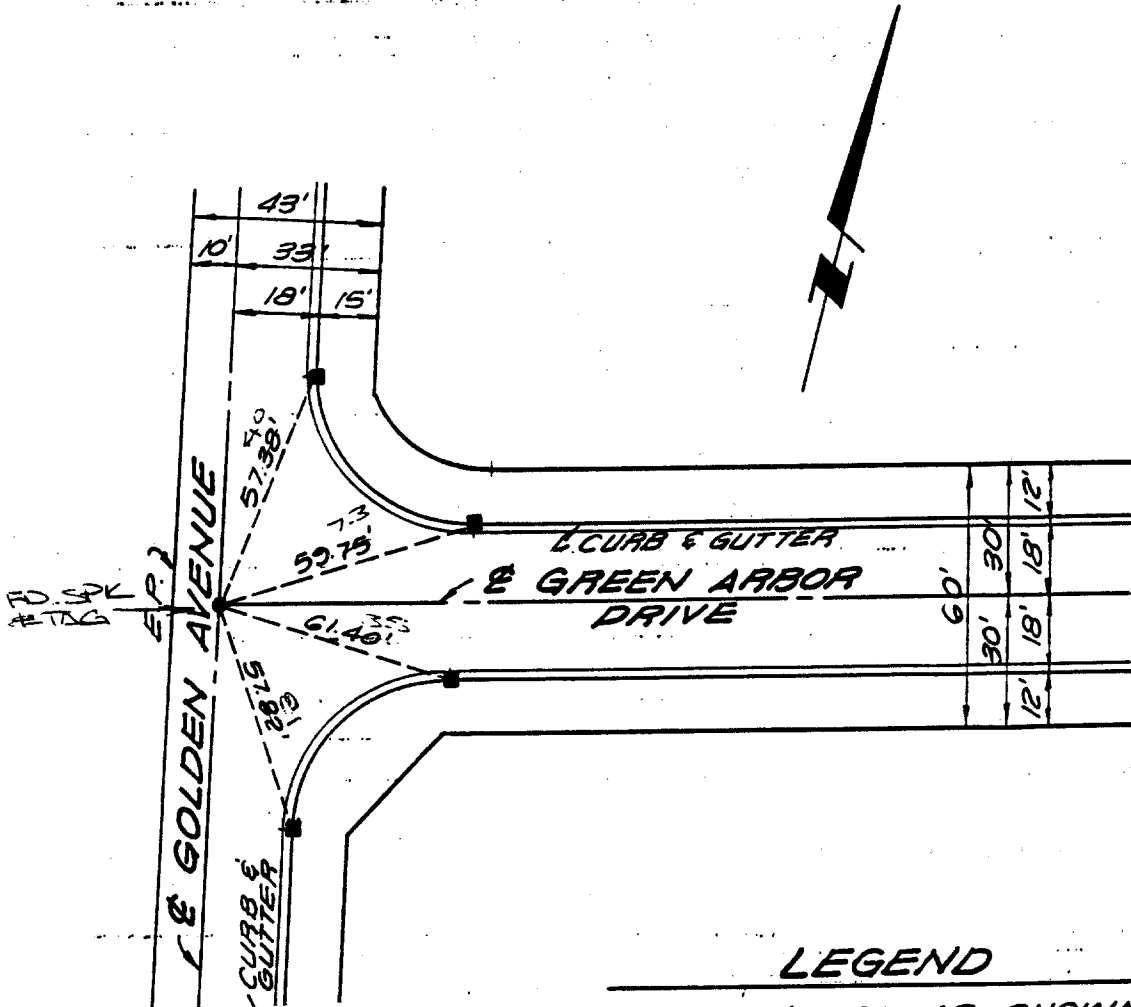


3560.TIF

R. L. BROWN & ASSOCIATES, INC.
1442 Irvine Blvd. Suite 125
TUSTIN, CALIFORNIA 92680
(714) 669-0972

JOB TRACT NO. 10604
SHEET NO. 2 OF 4
CALCULATED BY _____ DATE 11/2/87
CHECKED BY _____ DATE _____
SCALE 1" = 40'

CENTERLINE TIE NOTES



Richard L. Brown
RICHARD L. BROWN
R.C.E. 16683

- LEGEND**
- LEAD & TACK AS SHOWN
 - 1" I.P. TAGGED R.C.E. 16683

- ✕ FD. Ramset Nail on T/C
- FD. LD. & TK. on T/C
- FD. "C" Nail on T/C
- Set LD. & TK. on T/C

Street: Green Arbor Dr
X-Street: Golden Ave
OFFICIAL USE ONLY

Scale:
Date:
Drawn by:
W.O.:
F.B.:

OFFICIAL TIE PLAT
CITY OF RIVERSIDE

These ties are for the purpose of perpetuating the found monumentation. No claim is made as to the relationship of the points or lines shown hereon to true boundary locations.

Sheet 1 of 1
File No.: