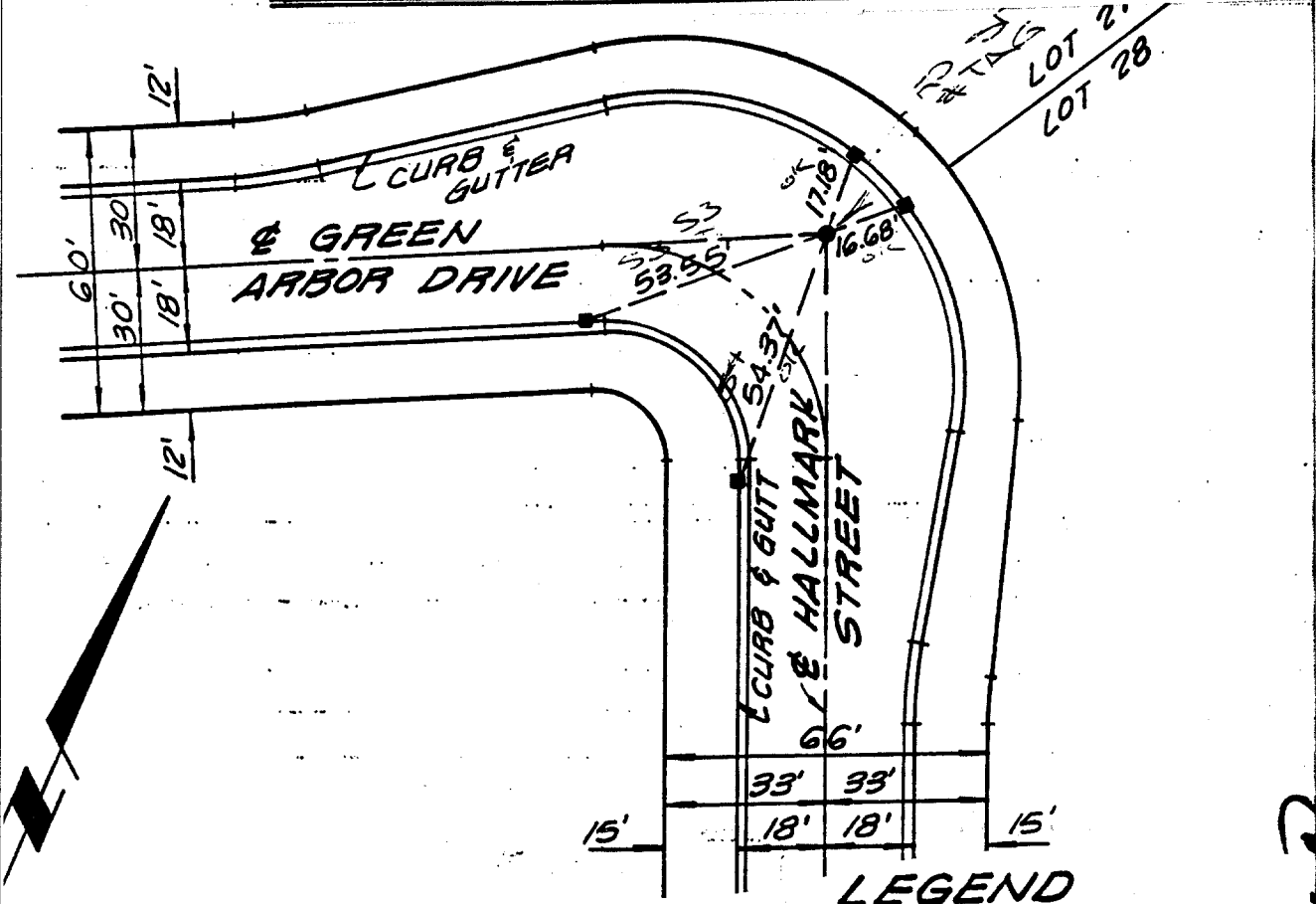


R. L. BROWN & ASSOCIATES, INC.
 1442 Irvine Blvd. Suite 125
 TUSTIN, CALIFORNIA 92680
 (714) 669-0972

JOB TRACT NO. 10604
 SHEET NO. 1 OF 4
 CALCULATED BY _____ DATE 11/2/87
 CHECKED BY _____ DATE _____
 SCALE 1" = 40'

CENTERLINE TIE NOTES



Richard L. Brown
RICHARD L. BROWN
 P.C.E. NO. 16683

- ✕ FD. Ramset Nail on T/C
- FD. "C" Nail on T/C
- FD. LD. & TK. on T/C
- Set LD. & TK. on T/C

Street: Green Arbor Dr.
 OFFICIAL USE ONLY
 X-Street: Hallmark St.

Scale:
 Date:
 Drawn by:
 W.O.:
 F.B.:

OFFICIAL TIE PLAT
 CITY OF RIVERSIDE

These ties are for the purpose of perpetuating the found monumentation. No claim is made as to the relationship of the points or lines shown hereon to true boundary locations.

Sheet 1 of 1
 File No.: