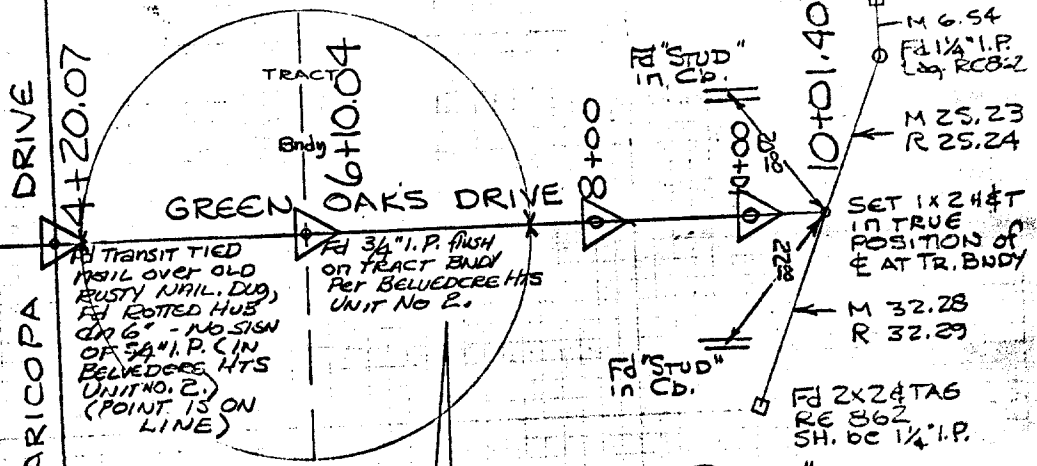


M-1/55

- 1. 179° 59' 25"
- 2. 350° 58' 05"
- 4. 337° 57' 56"
- Mn. 170° 57' 27"
- S.A. 179° 57' 30"



- 1. 180° 00' 38"
- 2. 0° 00' 56"
- 4. 0° 01' 58"
- Mn. 180° 00' 30"
- S.A. 180° 00' 30"

△ = ⊕ 36" Long x 6" Wide Painted White
 AT ALL LOCATIONS SHOWN THUS

- ✕ FD. Ramset Nail on T/C
- FD. LD. & TK. on T/C
- FD. "C" Nail on T/C
- Set LD. & TK. on T/C

Street: Green Oaks Dr
 X-Street: E of Maricopa Dr
 OFFICIAL USE ONLY

Scale:	OFFICIAL TIE PLAT CITY OF RIVERSIDE	<i>These ties are for the purpose of perpetuating the found monumentation. No claim is made as to the relationship of the points or lines shown hereon to true boundary locations.</i>	Sheet 1 of 1
Date:			File No.:
Drawn by:			
W.O.:			
F.B.:			