

358.77F

"SWING TIES"

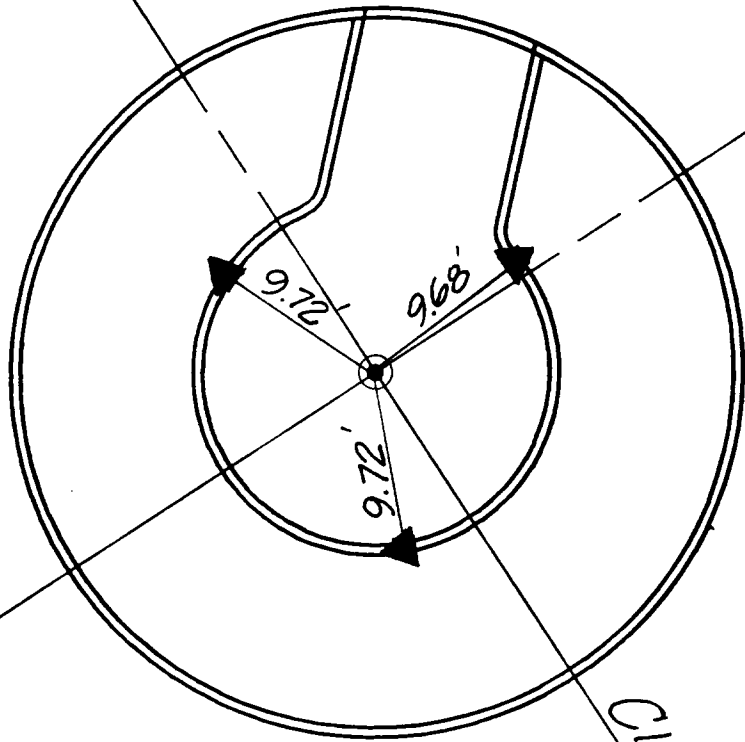
MOTOR

DRIVE

AUTO

CIRCLE

(EAST)



⊙ SET P.K. NAIL & CITY ENGR. TAG.

▲ SET RAMSET & SQ. FLASH ON T.C.

× FD. Ramset Nail on T/C

● FD. LD. & TK. on T/C

■ FD. "C" Nail on T/C

○ Set LD. & TK. on T/C

Street:

AUTO DRIVE

X-Street: MOTOR CIRCLE (EAST)
OFFICIAL USE ONLY

Scale: 1" = 20'

Date: 01/05/00

Drawn by: KGE-CS

W.O.:

F.B.:

OFFICIAL TIE PLAT

CITY OF RIVERSIDE

These ties are for the purpose of perpetuating the found monumentation. No claim is made as to the relationship of the points or lines shown hereon to true boundary locations.



Sheet 1 of 1

File No.: