

Street:

AUTO DRIVE

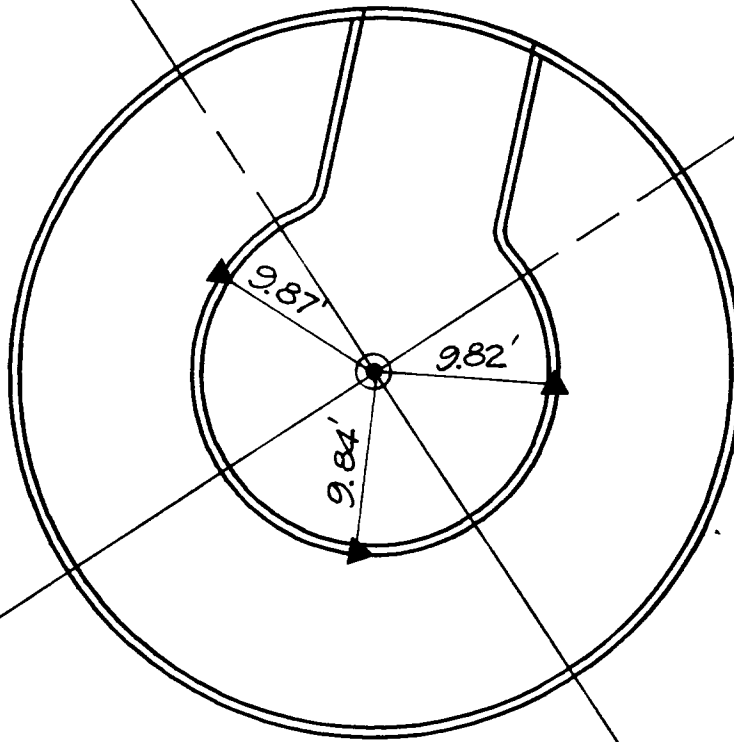
X-Street:
OFFICIAL USE ONLY

MOTOR CIRCLE (W)

360.71F

MOTOR

DRIVE



AUTO

CIRCLE (WEST)

⊙-- SET P.K. NAIL & CITY ENGR. TAG.

▲-- RAMSET & SQUARE FLASH ON T.C.

× FD. Ramset Nail on T/C

● FD. LD. & TK. on T/C

■ FD. "C" Nail on T/C

○ Set LD. & TK. on T/C

Scale: 1" = 20'

Date: 01/05/00

Drawn by: KGE-CS

W.O.:

F.B.:

OFFICIAL TIE PLAT

CITY OF RIVERSIDE

These ties are for the purpose of perpetuating the found monumentation. No claim is made as to the relationship of the points or lines shown hereon to true boundary locations.



Sheet 1 of 1

File No.: