

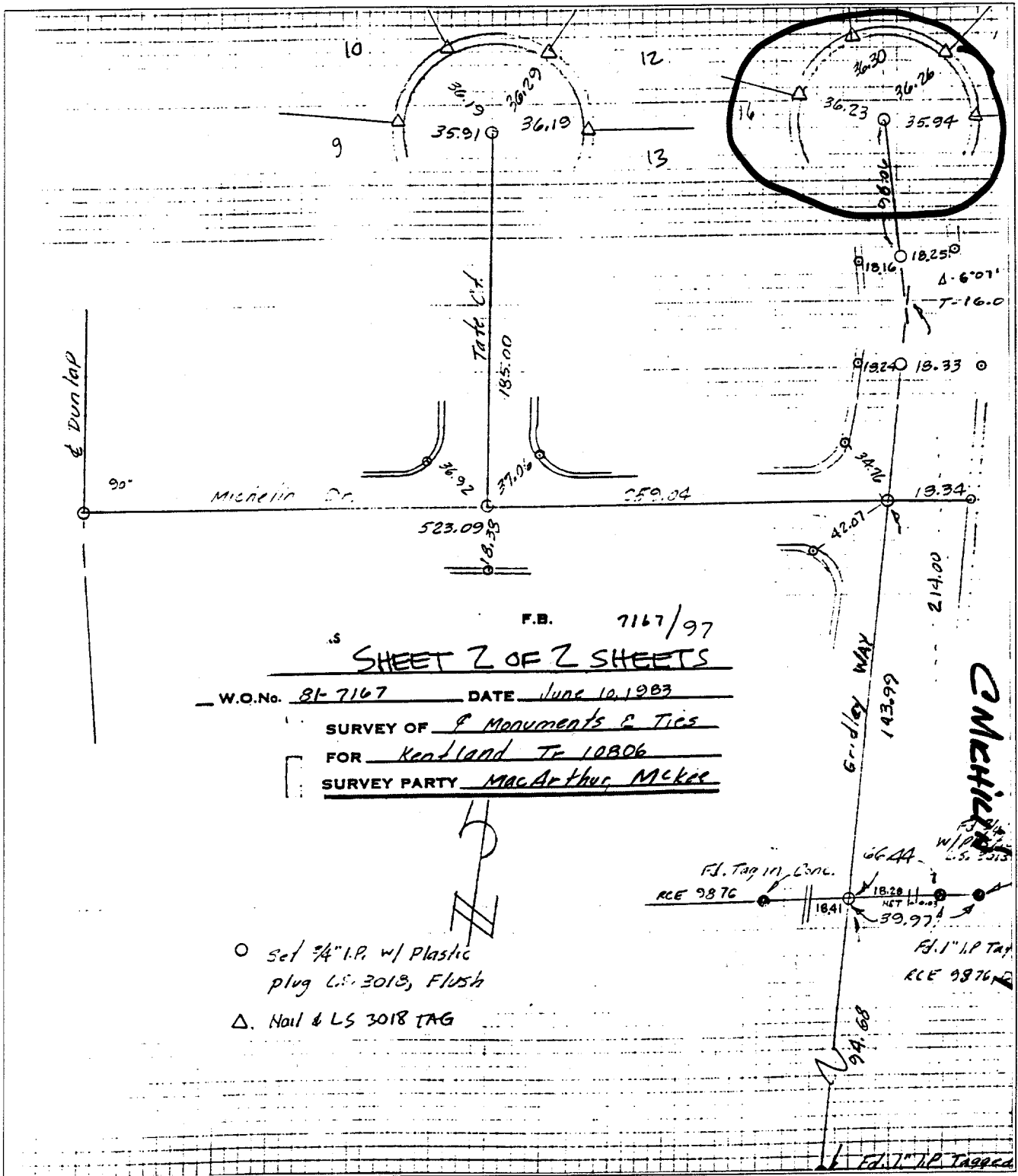
3603.TIF

Street: Griddley Way

OFFICIAL USE ONLY

X-Street: Culde Sac

Culde Sac



F.B. 7167/97
SHEET 2 OF 2 SHEETS
 W.O.No. 81-7167 DATE June 10, 1983
 SURVEY OF 9 Monuments & Ties
 FOR Kenland Tr 10806
 SURVEY PARTY MacArthur, McKee

- Set 3/4" I.P. w/ Plastic plug L.S. 3018, Flush
- △ Nail & LS 3018 TAG

- ⊗ FD. Ramset Nail on T/C
- FD. LD. & TK. on T/C
- FD. "C" Nail on T/C
- Set LD. & TK. on T/C

Scale:
 Date:
 Drawn by:
 W.O.:
 F.B.:

OFFICIAL TIE PLAT
CITY OF RIVERSIDE

These ties are for the purpose of perpetuating the found monumentation. No claim is made as to the relationship of the points or lines shown hereon to true boundary locations.

Sheet 1 of 1
 File No.: