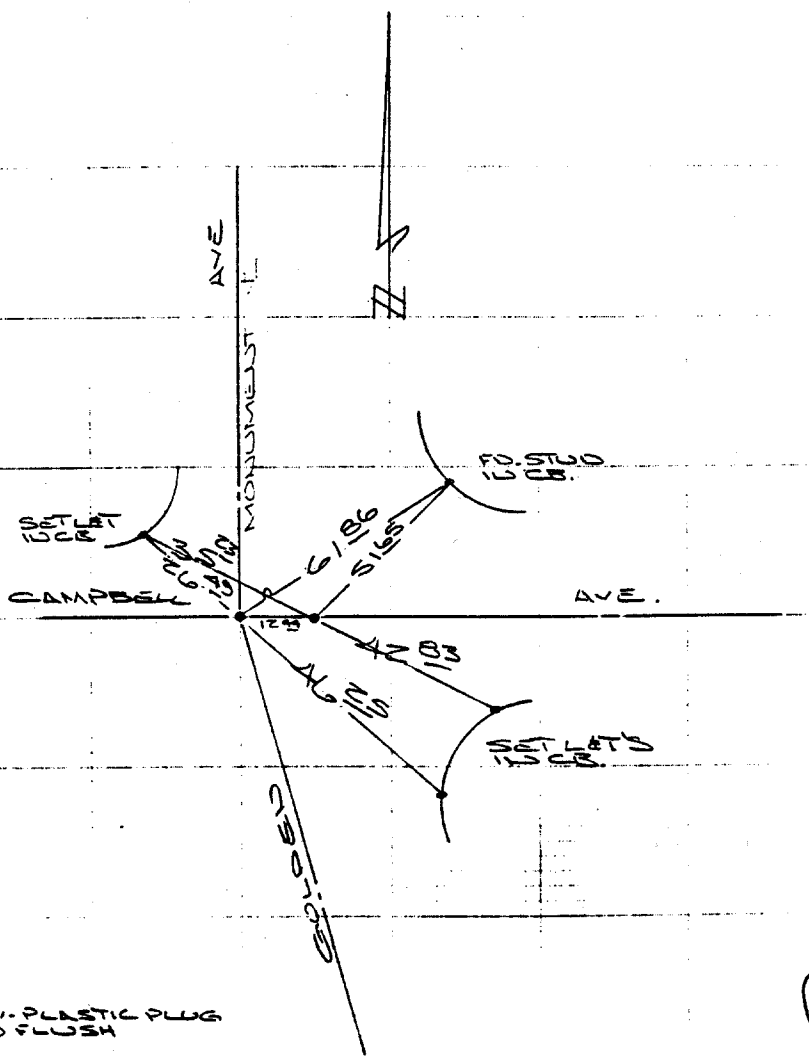


3676.TIF

Street: **GOLDEN AVE**  
X-Street: **CAMPBELL AVE**

HISTORICAL DATA  
FB 747/41  
FB 678/17

TRAVELIT & SWING  
TIES



GOLDEN AVE @ CAMPBELL AVE  
②

MONUMENTS TO BE 1.5" DIA. PLASTIC PLUG  
STAMPED U.S. 3000' FLUSH

Scale: ~~1"=100'~~

Date: ~~07-27-00~~

Drawn by: survey

W.O.:

F.B.:

### OFFICIAL TIE PLAT CITY OF RIVERSIDE

*These ties are for the purpose of perpetuating the found monumentation. No claim is made as to the relationship of the points or lines shown hereon to true boundary locations.*

Sheet 1 of 1  
File No.: