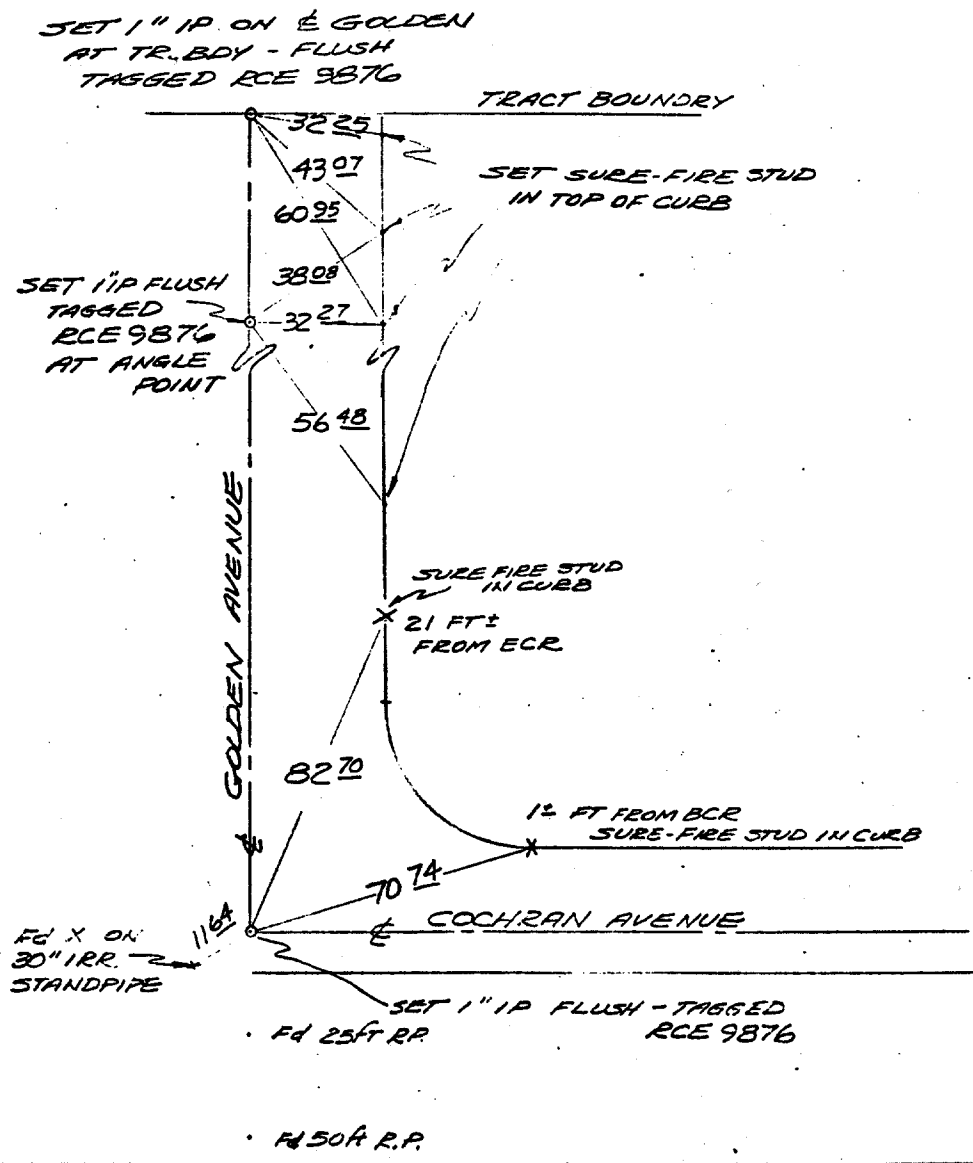


**HISTORICAL DATA**  
 A.A. WEBB  
 FB 1032/185  
 TRACT 5677-1

**SWING TIES**

**CREW**  
 AGUILERA, J.  
 EVANS, H  
 DENHAM, D.  
 3-5-76

Street: **GOLDEN AVE**  
 X-Street: **COCHRAN & TR. BDY & GOLDEN ANGLE POINT**



COCHRAN & TR. BDY  
 GOLDEN ANGLE POINT

Scale: ~~1"=50'~~  
 Date: 04/27/00  
 Drawn by: survey  
 W.O.:  
 F.B.:

**OFFICIAL TIE PLAT**  
 CITY OF RIVERSIDE

These ties are for the purpose of perpetuating the found monumentation. No claim is made as to the relationship of the points or lines shown hereon to true boundary locations.

Sheet 1 of 1  
 File No.: