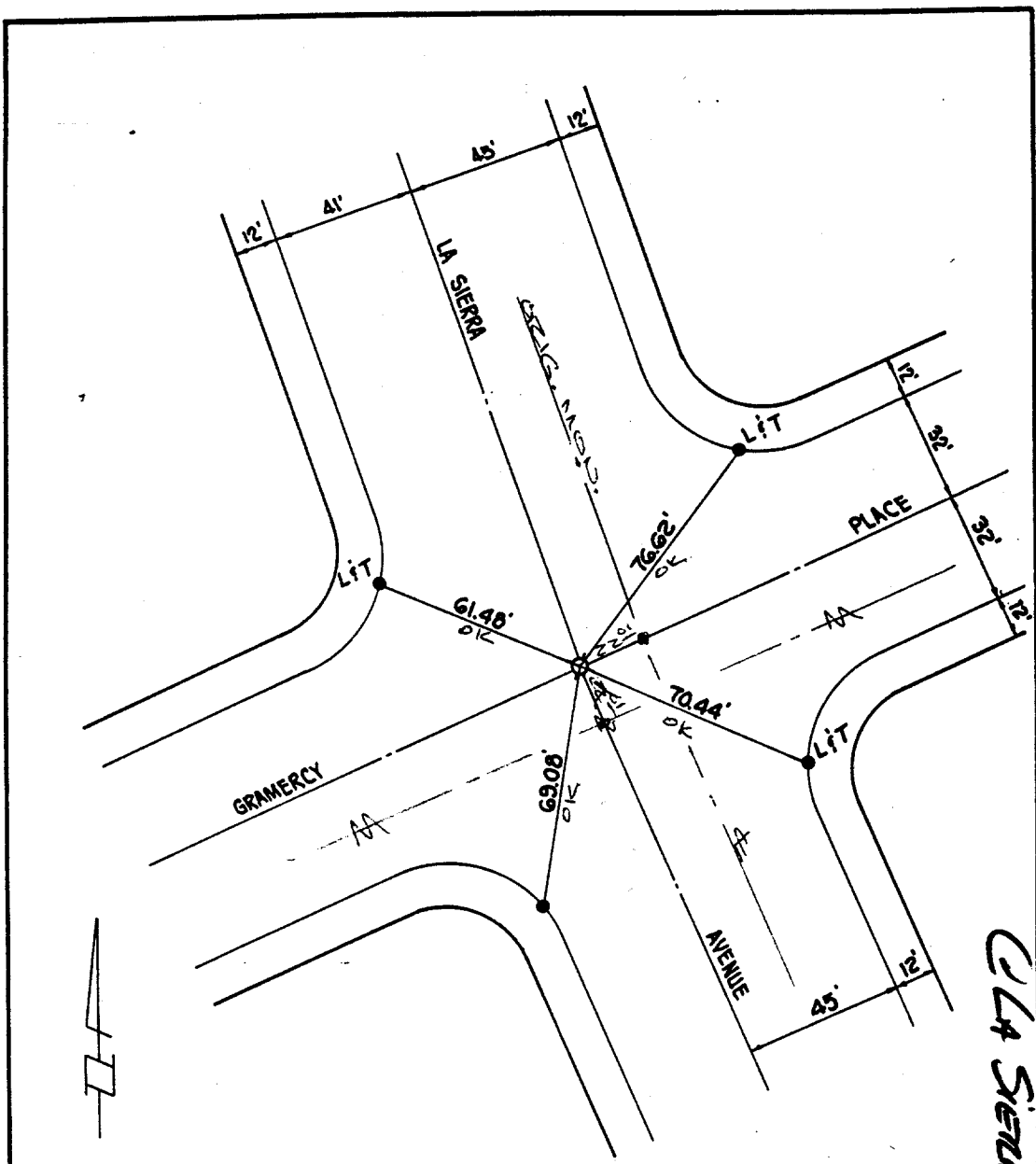


3727. TIF

Street: **GRAMERCY PL**

OFFICIAL USE ONLY

X-Street: **LA SIERRA AVE**



GRAMERCY PL  
 LA SIERRA

- ☒ SET 1" I.P. WITH PLASTIC PLUG STAMPED R.C.E. 13116, FLUSH.
- SET DRIVE PIN IN TOP OF CURB, UNLESS OTHERWISE NOTED.

G.V.W. ASSOCIATES, INC. WALNUT, CALIFORNIA	<b>MONUMENT TIES</b> FOR TRACT 19718-1	SHEET NO. <u>1</u> OF <u>10</u> DATE <u>5-21-85</u> SCALE <u>1" = 40'</u>
---	---	---

- ☒ FD. Ramset Nail on T/C
- FD. LD. & TK. on T/C
- FD. "C" Nail on T/C
- Set LD. & TK. on T/C

Scale: \_\_\_\_\_

Date: \_\_\_\_\_

Drawn by: \_\_\_\_\_

W.O.: \_\_\_\_\_

F.B.: \_\_\_\_\_

OFFICIAL TIE PLAT

CITY OF RIVERSIDE

These ties are for the purpose of perpetuating the found monumentation. No claim is made as to the relationship of the points or lines shown hereon to true boundary locations.

Sheet 1 of 1

File No.: \_\_\_\_\_