

TRACT NO. 3561
 Being a Subdivision of Lot 1 and Portions of
 Lots 2 and 3 of the Map of Calkins Addition
 Filed in BK. 11 of Maps, Pg. 13 thereof,
 Riverside County Records.

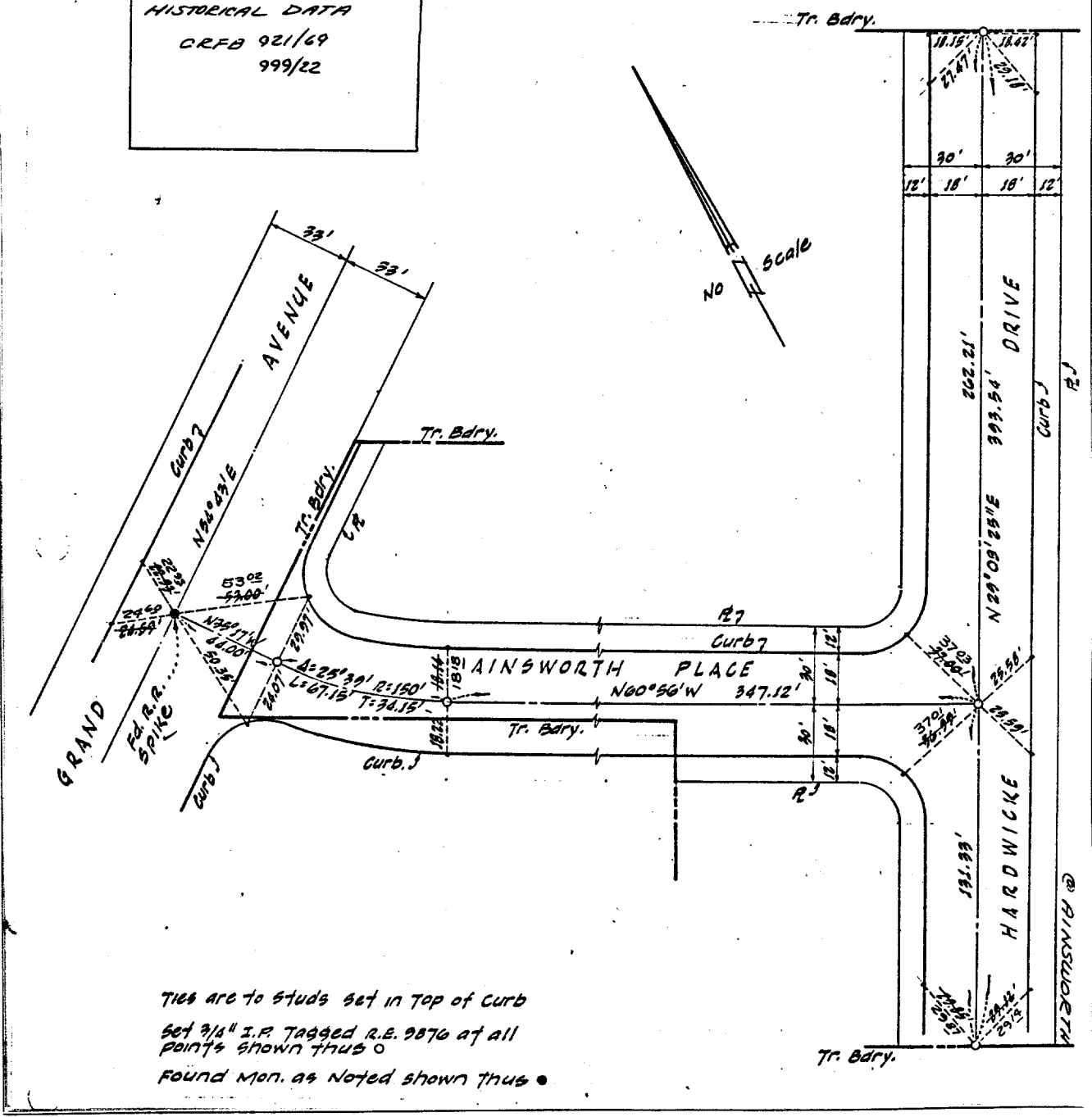
HISTORICAL DATA
 CRFB 921/69
 999/22

HARDWICKE DR.

Street: **GRAND AVE**

X-Street: **AINSWORTH PL.**
 OFFICIAL USE ONLY

①



TIES are to studs set in top of curb
 Set 3/4" I.P. Tagged R.E. 9876 at all
 points shown thus ○
 Found Mon. as Noted shown thus ●

- ✕ FD. Ramset Nail on T/C
- FD. LD. & TK. on T/C
- FD. "C" Nail on T/C
- Set LD. & TK. on T/C

Scale:	OFFICIAL TIE PLAT CITY OF RIVERSIDE	These ties are for the purpose of perpetuating the found monumentation. No claim is made as to the relationship of the points or lines shown hereon to true boundary locations.
Date:		
Drawn by:		
W.O.:		
F.B.:	Sheet 1 of 1	File No.: