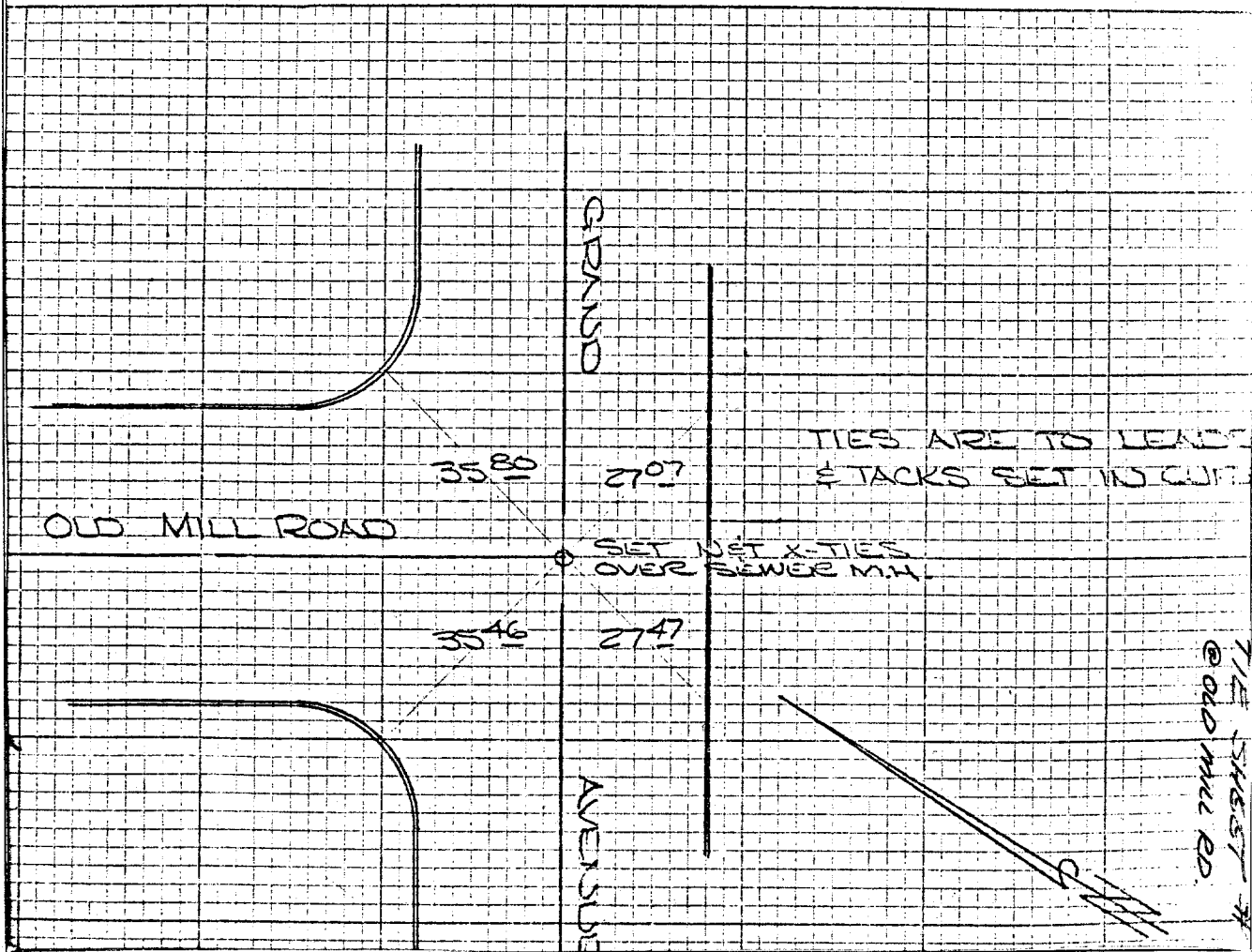


Street: **GRAND AVE**

X-Street: **OLD MILL RD**
OFFICIAL USE ONLY

10

HISTORICAL DATA FB 9/21/62	TRANSIT TIES	CREW: STEELE FRY NEW SEPT 22, '71 FB 9/21/63
-------------------------------	--------------	---



- ✕ FD. Ramset Nail on T/C
- FD. LD. & TK. on T/C
- FD. "C" Nail on T/C
- Set LD. & TK. on T/C

OFFICIAL TIE PLAT

CITY OF RIVERSIDE

These ties are for the purpose of perpetuating the found monumentation. No claim is made as to the relationship of the points or lines shown hereon to true boundary locations.

Sheet 1 of 1
File No.:

Scale:
Date:
Drawn by:
W.O.:
F.B.: