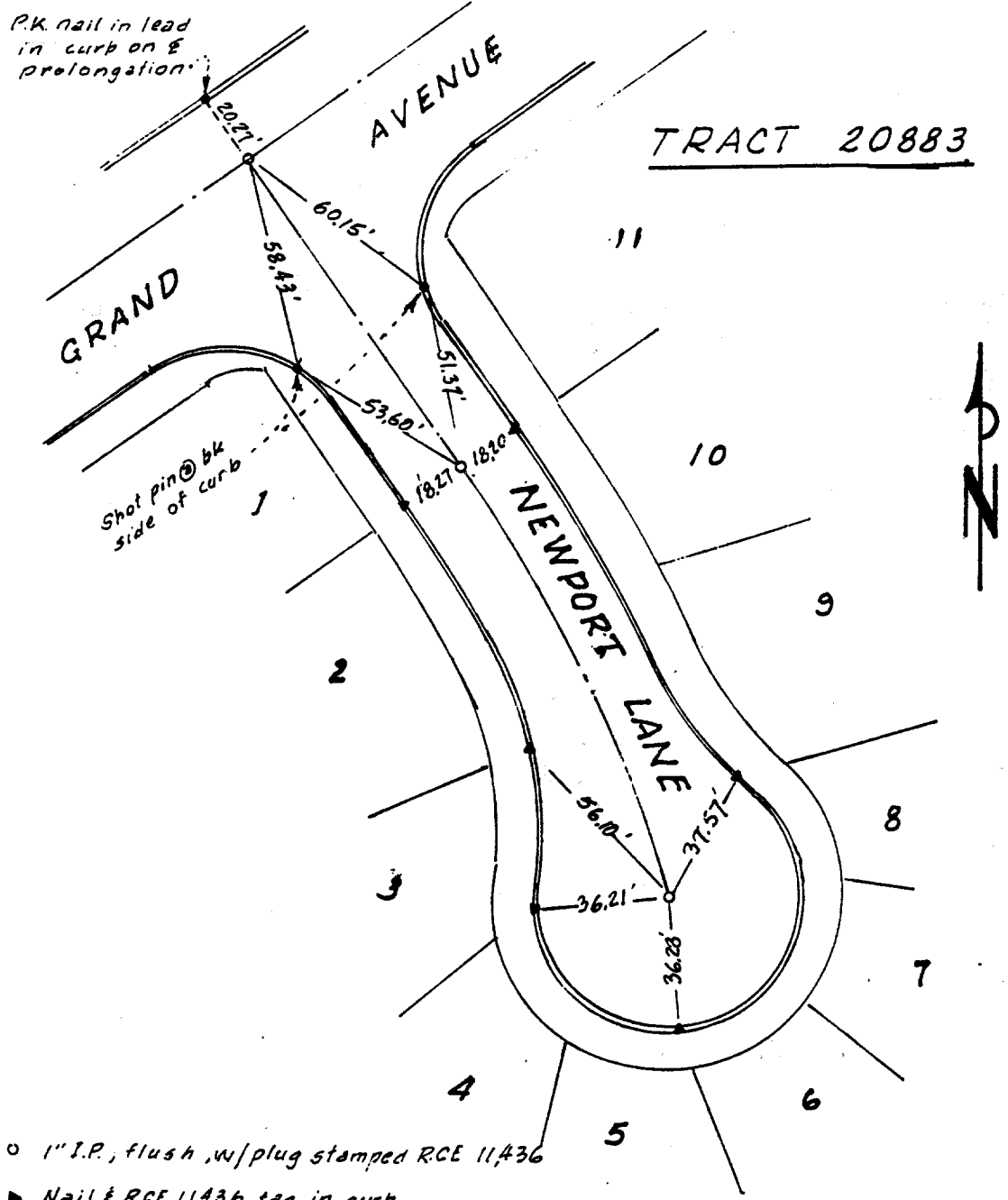


Street: GRAND AVE
 X-Street: Newport Ln.
 OFFICIAL USE ONLY

GRAND AVE at NEWPORT LN.



- 1" I.P., flush w/plug stamped RCE 11436
- ▶ Nail & RCE 11436 tag in curb, on prolongation of lot line.

- ✕ FD. Ramset Nail on T/C
- FD. LD. & TK. on T/C
- FD. "C" Nail on T/C
- Set LD. & TK. on T/C

Scale: 1" = 40'
 Date: Dec. 9, 1994
 Drawn by: J R H
 W.O.:
 F.B.:

OFFICIAL TIE PLAT
 CITY OF RIVERSIDE

These ties are for the purpose of perpetuating the found monumentation. No claim is made as to the relationship of the points or lines shown hereon to true boundary locations.

Sheet 1 of 1
 File No.: