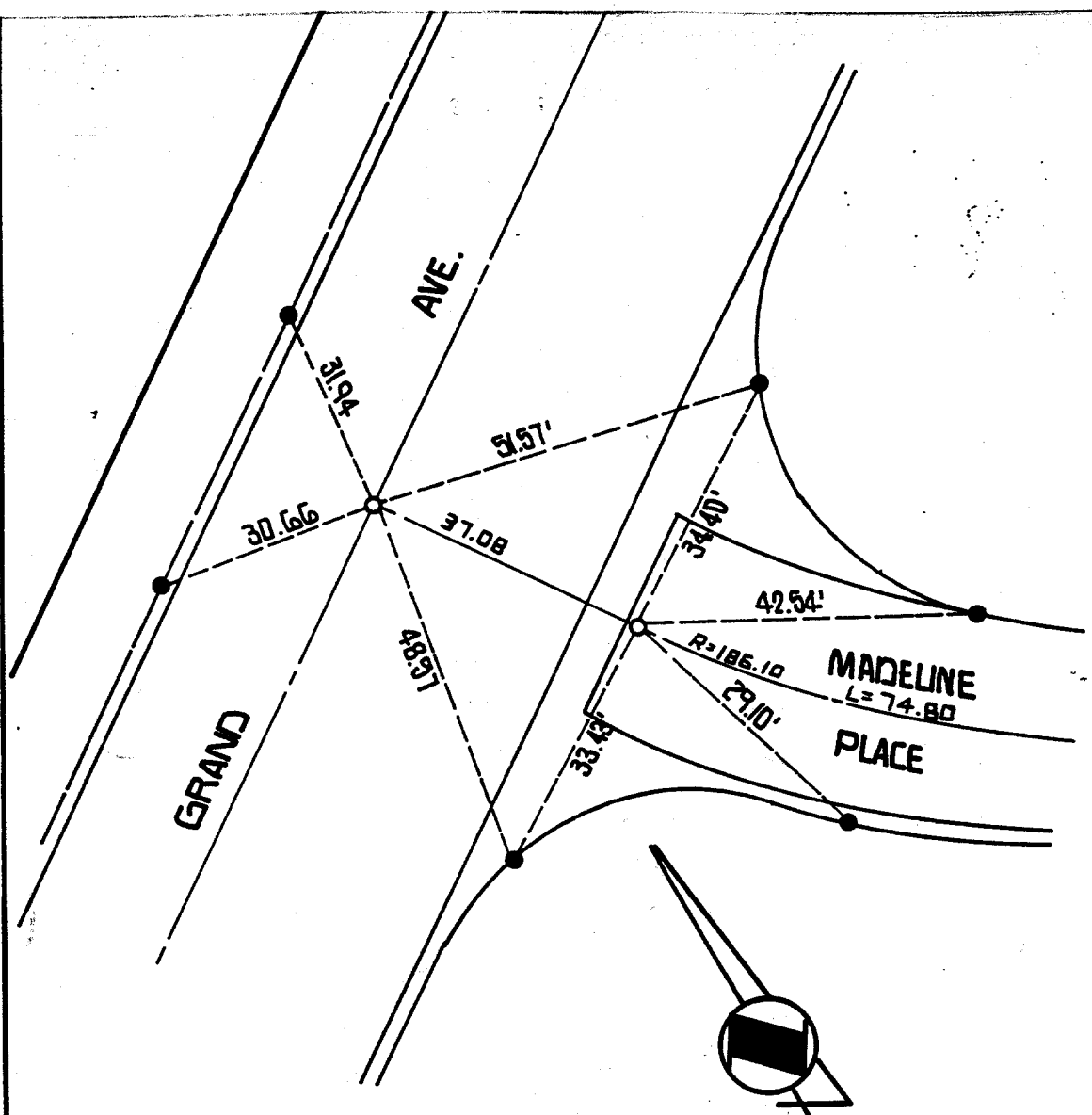


3767.T1F

Street: **GRAND AVE**

OFFICIAL USE ONLY
X-Street: **MADELINE PL**

GRAND AVE



○ = SET 1" I.P. WITH PLASTIC PLUG RCE 13116, FLUSH UNLESS OTHERWISE NOTED.

● = SET DRIVE PIN IN TOP OF CURB UNLESS OTHERWISE NOTED.

G.V.W. ENGINEERING, INC.
667 S. BREA CANYON RD. STE. 27
WALNUT, CA. 91789

CENTERLINE TIES
CITY OF RIVERSIDE
TRACT NO. 23391

GARRY N. VANDER WENDE R.C.E. 13116

DATE: APRIL 26, 1994

REF. 811 - 0201

SCALE 1" = 20'

SHEET 1 OF 4

✕ FD. Ramset Nail on T/C
■ FD. "C" Nail on T/C

● FD. LD. & TK. on T/C
○ Set LD. & TK. on T/C

14

Scale:
Date:
Drawn by:
W.O.:
F.B.:

OFFICIAL TIE PLAT
CITY OF RIVERSIDE

These ties are for the purpose of perpetuating the found monumentation. No claim is made as to the relationship of the points or lines shown hereon to true boundary locations.

Sheet 1 of 1
File No.: