

3801
~~3802~~, TIF

Street: HILLSIDE AVE

X-Street: WALTER ST
 OFFICIAL USE ONLY

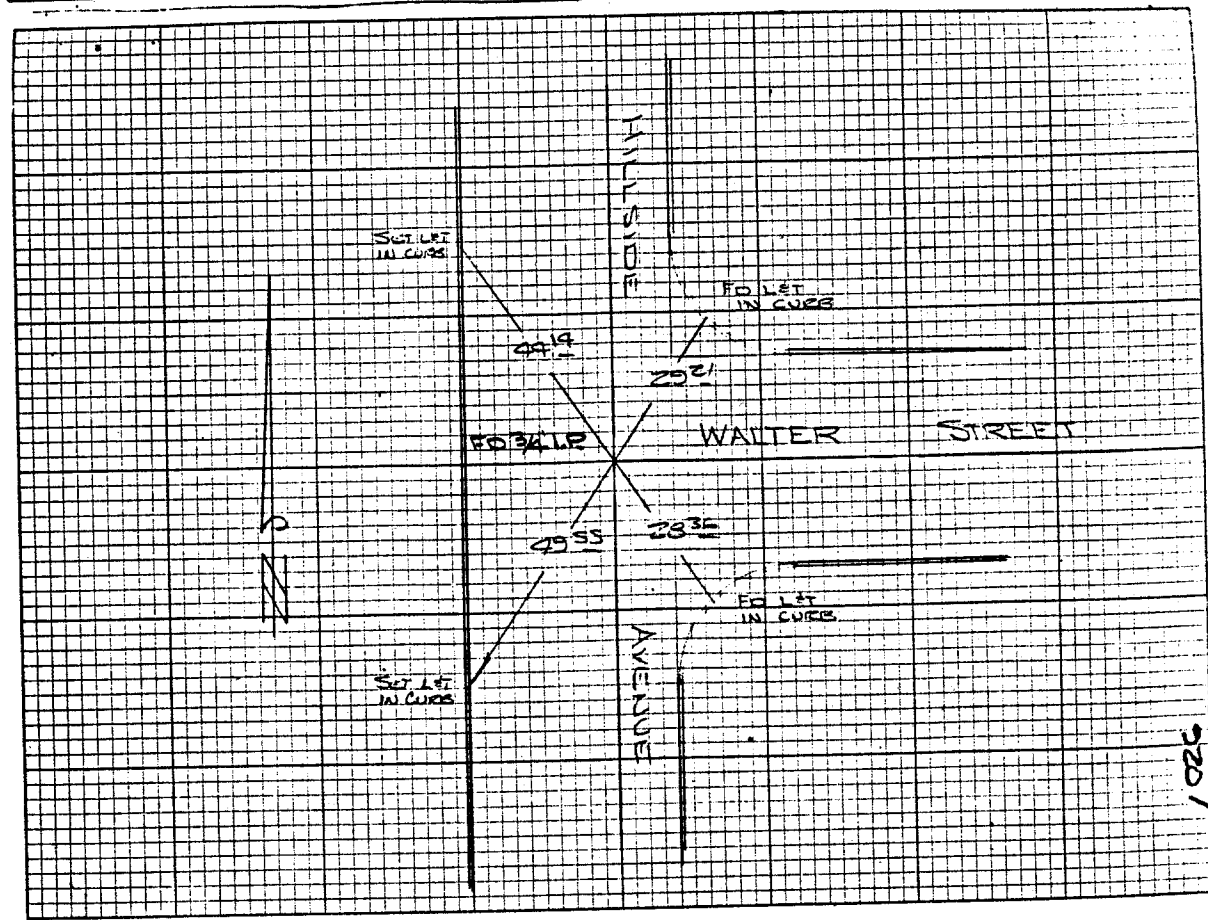
WALTER ST

C.R.F.B. 959/18
 520

HISTORICAL
 DATA
 FIS. 200/870
 FB. 446/13

TRANSIT TIES

CREW:
 STEELE
 FREY
 S. 28-05
 FB 920/13



- ✕ FD. Ramset Nail on T/C
- FD. LD. & TK. on T/C
- FD. "C" Nail on T/C
- Set LD. & TK. on T/C

Scale:
 Date:
 Drawn by:
 W.O.:
 F.B.:

OFFICIAL TIE PLAT

CITY OF RIVERSIDE

These ties are for the purpose of perpetuating the found monumentation. No claim is made as to the relationship of the points or lines shown hereon to true boundary locations.

Sheet 1 of 1
 File No.: