

Street: **HOLE AVE**

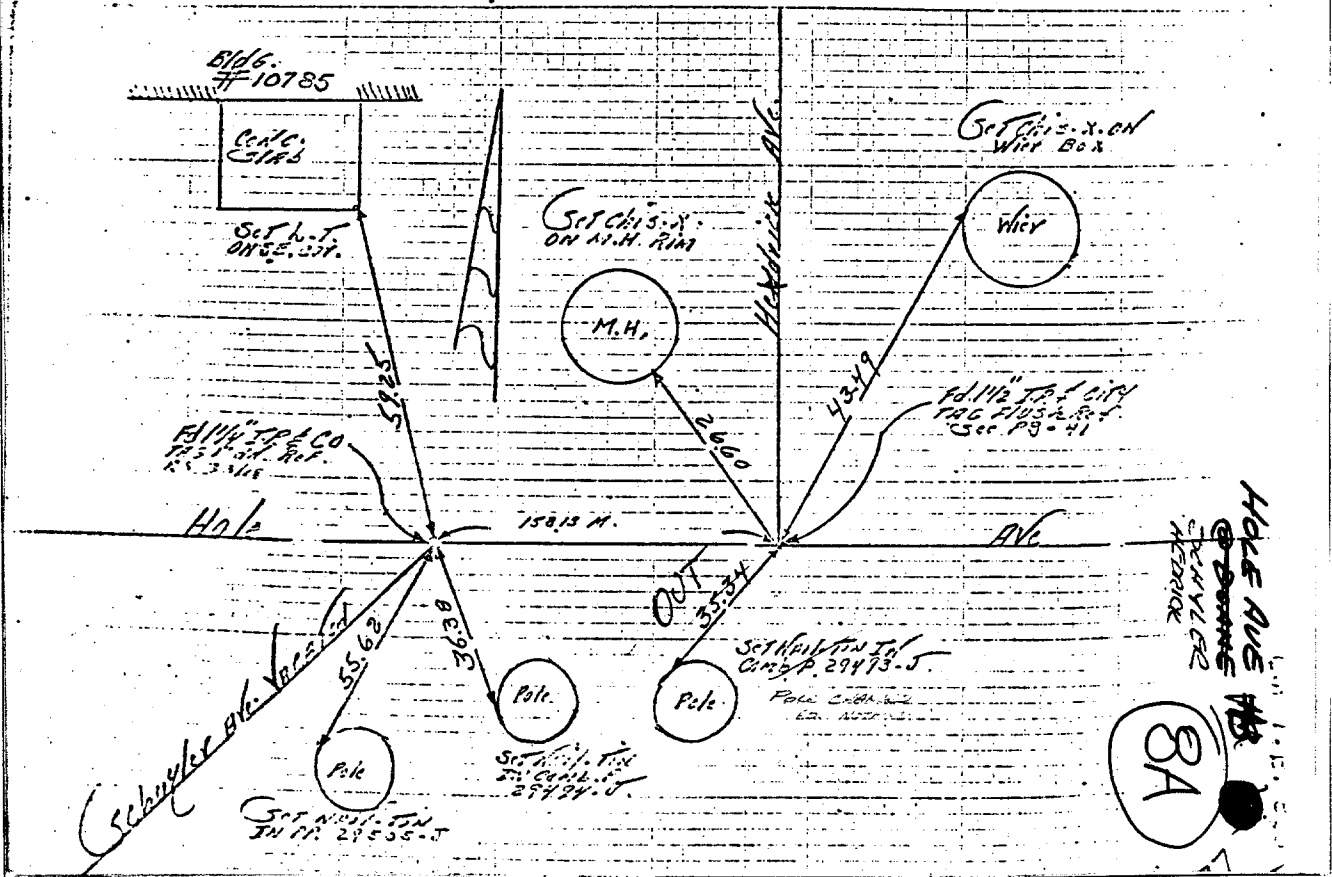
X-Street: **HEDRICK & SCHUYLER AVE**
 OFFICIAL USE ONLY

Historical DATA
 See Co. P. 15 - 35/18
 See 732/50

Field PARTY
 LOWRY
 GRANDINETS
 F.Y.C.
 F.B. 850/44
 8-7-1968

FB 850/44

Swing Ties



- ✕ FD. Ramset Nail on T/C
- FD. LD. & TK. on T/C
- FD. "C" Nail on T/C
- Set LD. & TK. on T/C

Scale:
 Date:
 Drawn by:
 W.O.:
 F.B.:

OFFICIAL TIE PLAT
CITY OF RIVERSIDE

These ties are for the purpose of perpetuating the found monumentation. No claim is made as to the relationship of the points or lines shown hereon to true boundary locations.

Sheet 1 of 1
 File No.: